

Harrow Green

Grid

All

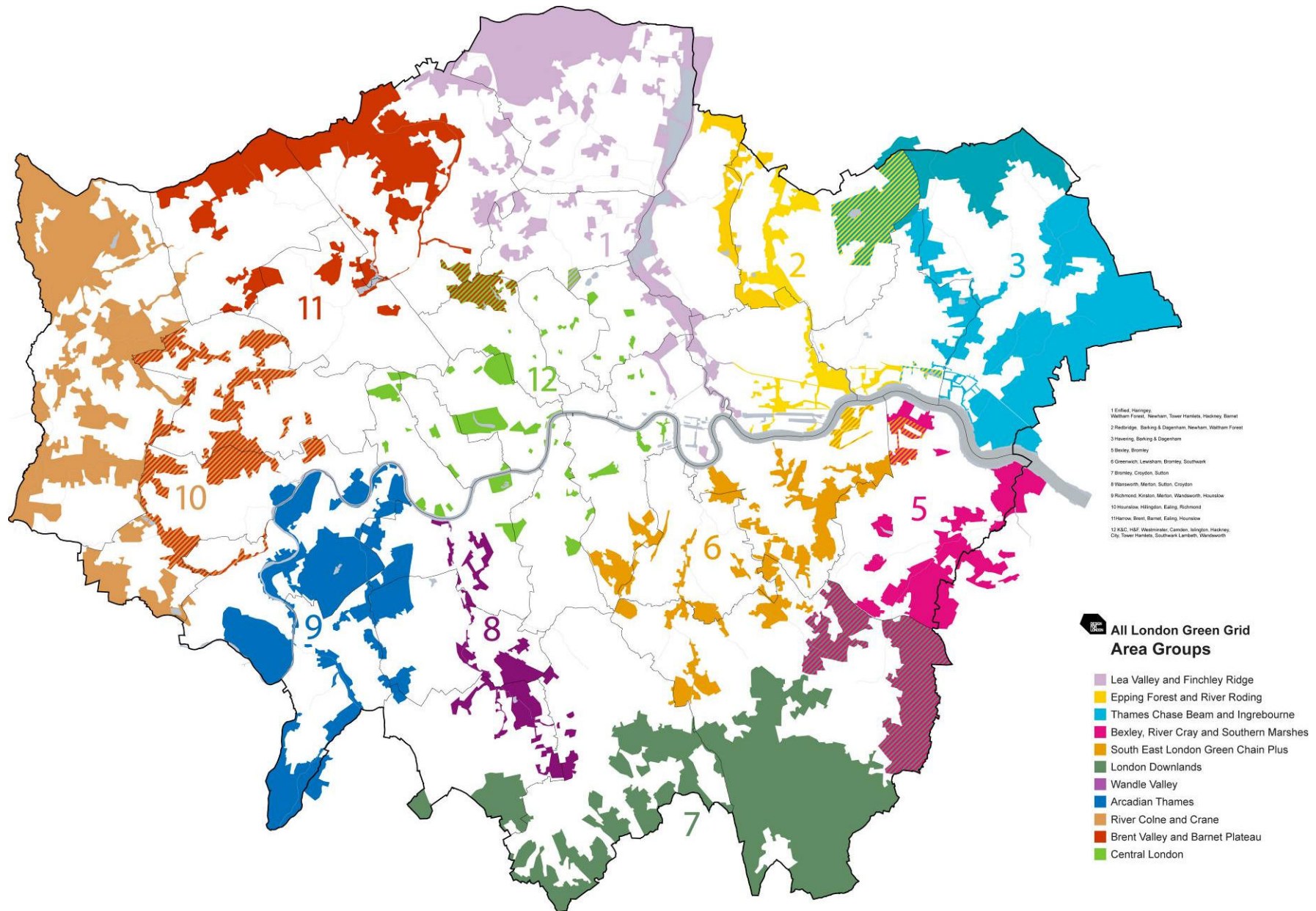
London

Green

Grid

A network of interlinked multi-purpose open spaces with good connections to the areas where people live and work, public transport, the green belt and the Thames.

All London Green Grid - Methodology



Programme objectives



Access to Open Space



Access to Nature



Managing Flood Risk



Making Connections



Distinctive Destinations



Healthy Communities



Productive Landscapes



Skills and Training

1 Access to open space



- Promoting the greenbelt as part of Harrow's strengths
- Providing and promoting connected green routes to green belt and open space for walkers and cyclists
- Addressing severance caused by transport corridors in key locations



2 Access to nature



- Increasing ecological diversity in Harrow's parks and open spaces
- Making more use of streams in open spaces for habitat creation
- Raising the profile of streams in the Borough, and improving paths along them



3 Managing flood risk and urban heat island



- Increasing the water storage capacity of streams in open spaces
- Naturalising canalised streams to slow run off
- Increasing tree and vegetation cover, to absorb surface water and cool climate
- Encouraging use of sustainable urban drainage solutions



4 Making connections



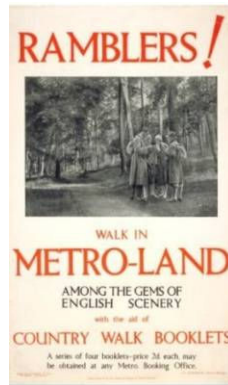
- Improving quality, providing continuous cycling and walking routes to and through green space
- Celebrating and revealing Harrow's green infrastructure, places and paths, and promoting the green grid for leisure and transport



6 Healthy communities



- Celebrating and revealing Harrow's spaces for sport & recreation, and encouraging cycling and walking to them
- Promoting, and improving facilities for walking and cycling in the green grid for leisure, active recreation, and transport



7 Productive landscape



- Celebrating and continuing Harrow's commitment to provision of allotments in the Borough to promote growth.
- Fostering commercial investment in, and community access to productive landscapes, to promote sustainable food production, healthy eating, education & training.



8 Skills and training



Young people gaining qualifications in landscape management and grounds maintenance in ELGG Bexley (Groundwork London)



- Encouraging diversity in management and horticultural practices in Harrow's parks and open spaces, to support opportunities for green skills sector training.
- Engaging with skills training providers and the voluntary sector using the Green Grid framework, to structure interventions in open space improvement towards a clear end vision

Area description / Overview



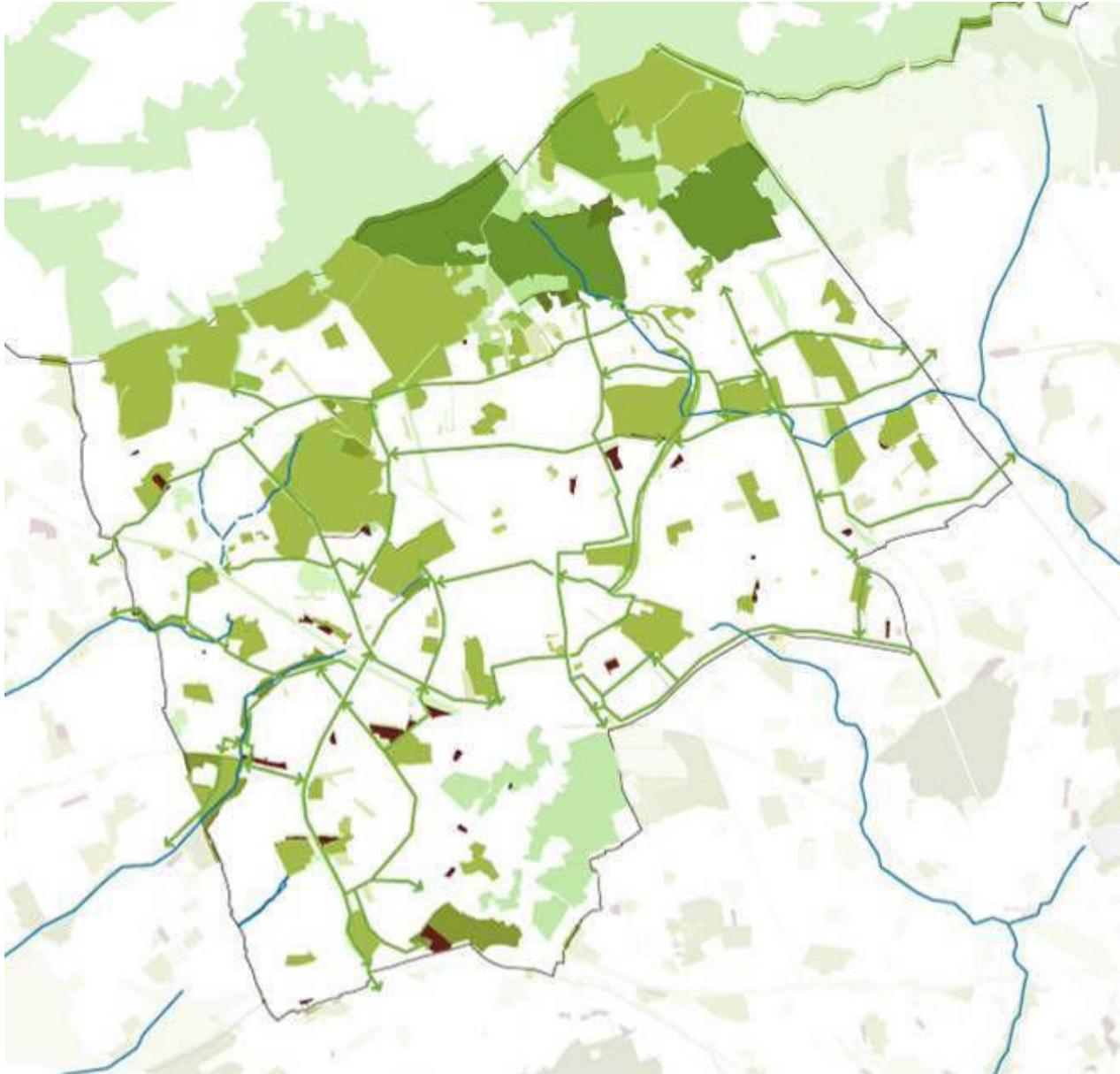
Harrow has a wealth of green infrastructure resources. It has substantial areas of accessible green belt along its northern boundary.

Its residential suburban streets are largely tree-lined, many with wide pavements, green verges and little traffic.

There are many mature well maintained public parks, sports fields and well kept allotments.

The Borough has access to three rivers, the Brent, Colne and Crane .

Area description / Green Space Networks



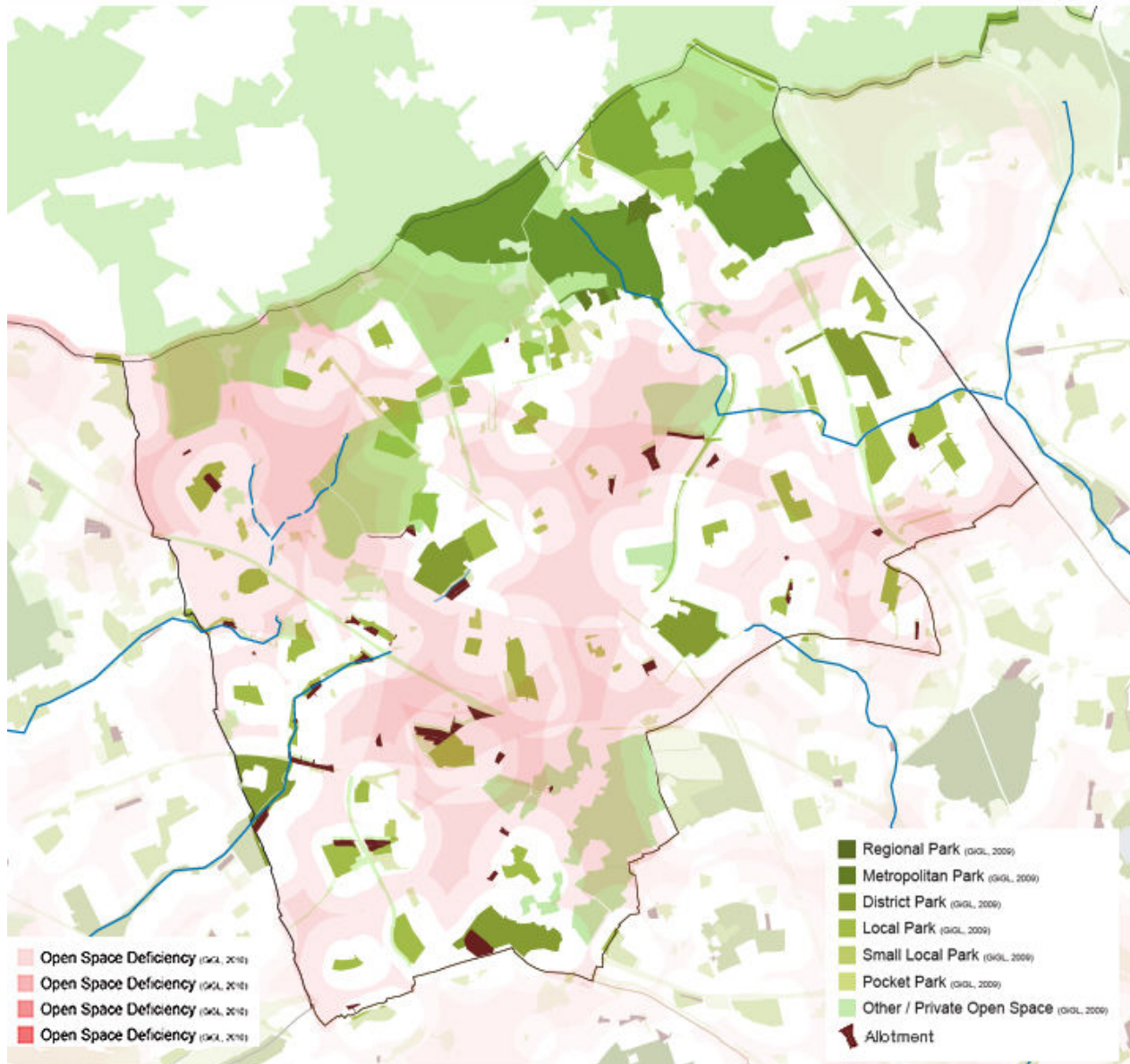
Harrow's green spaces does not currently read as a network.

Suburban street patterns can be disorientating, and many green spaces are hidden from view.

There are few linking walks or routes.

Local people may not be aware of, or know how to access open space, except by car.

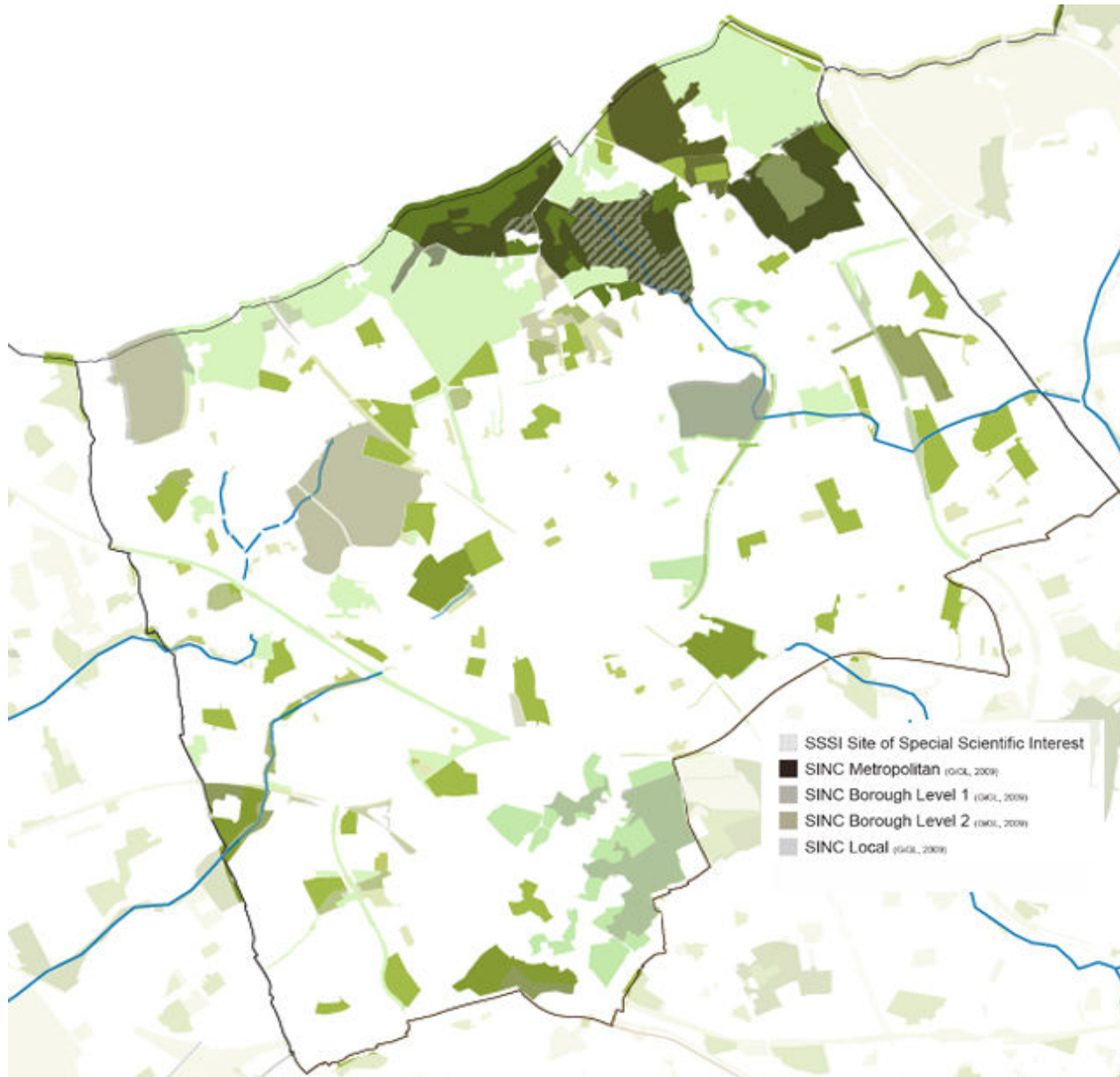
Area description / Deficiencies



Despite containing a large number of green open spaces, parts of the Borough have been identified as deficient in public parks/open space.

This is due partly to restricted access to private land, and also to severance by roads and railway lines.

Area description / Nature conservation

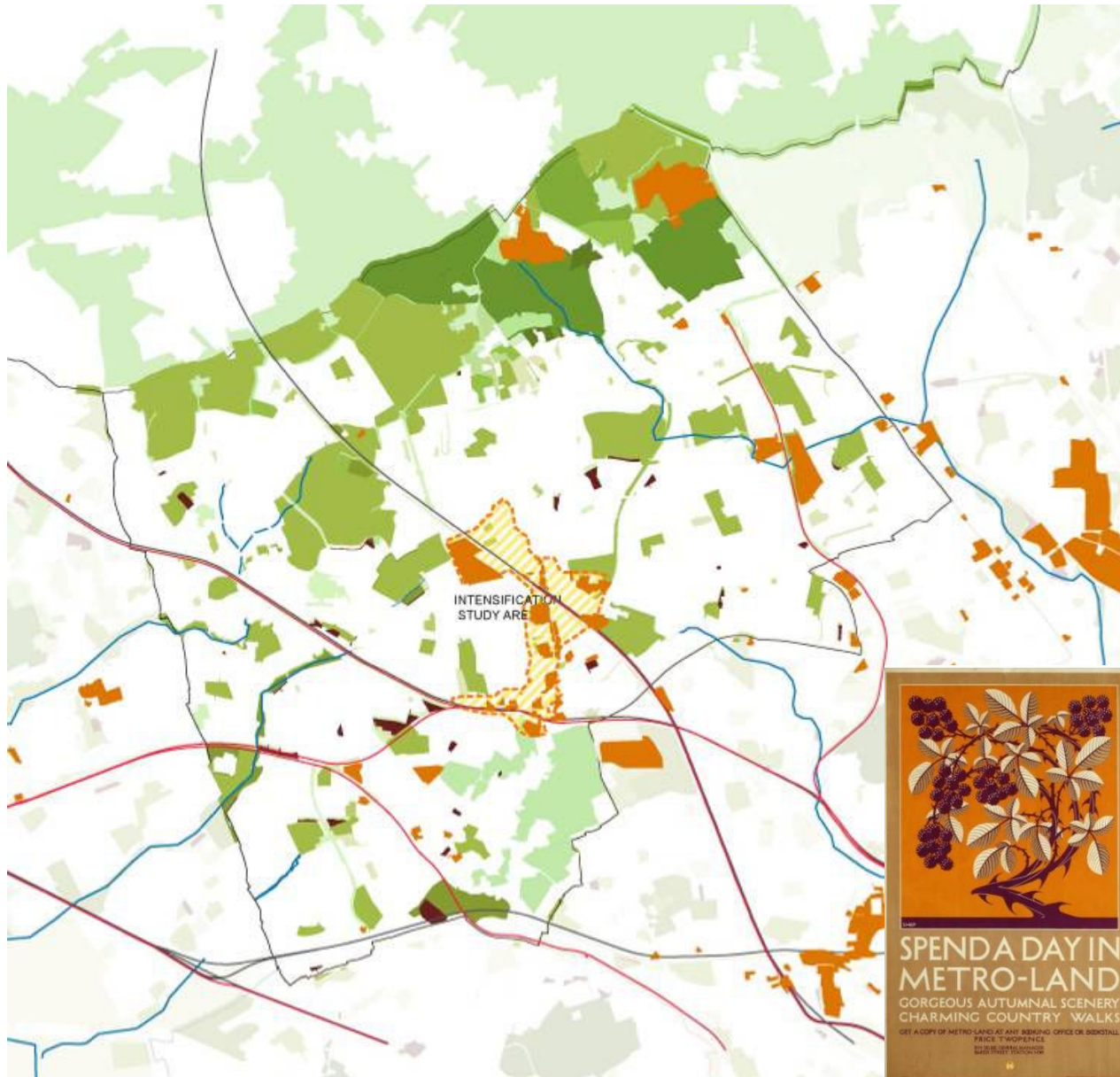


Harrow's public open spaces have relatively limited ecological diversity compared with other boroughs - much of the public open space is given over to amenity grassland.

Streams are pushed to the margins of green spaces or contained in concrete channels, with limited wetland and riparian flora or fauna.

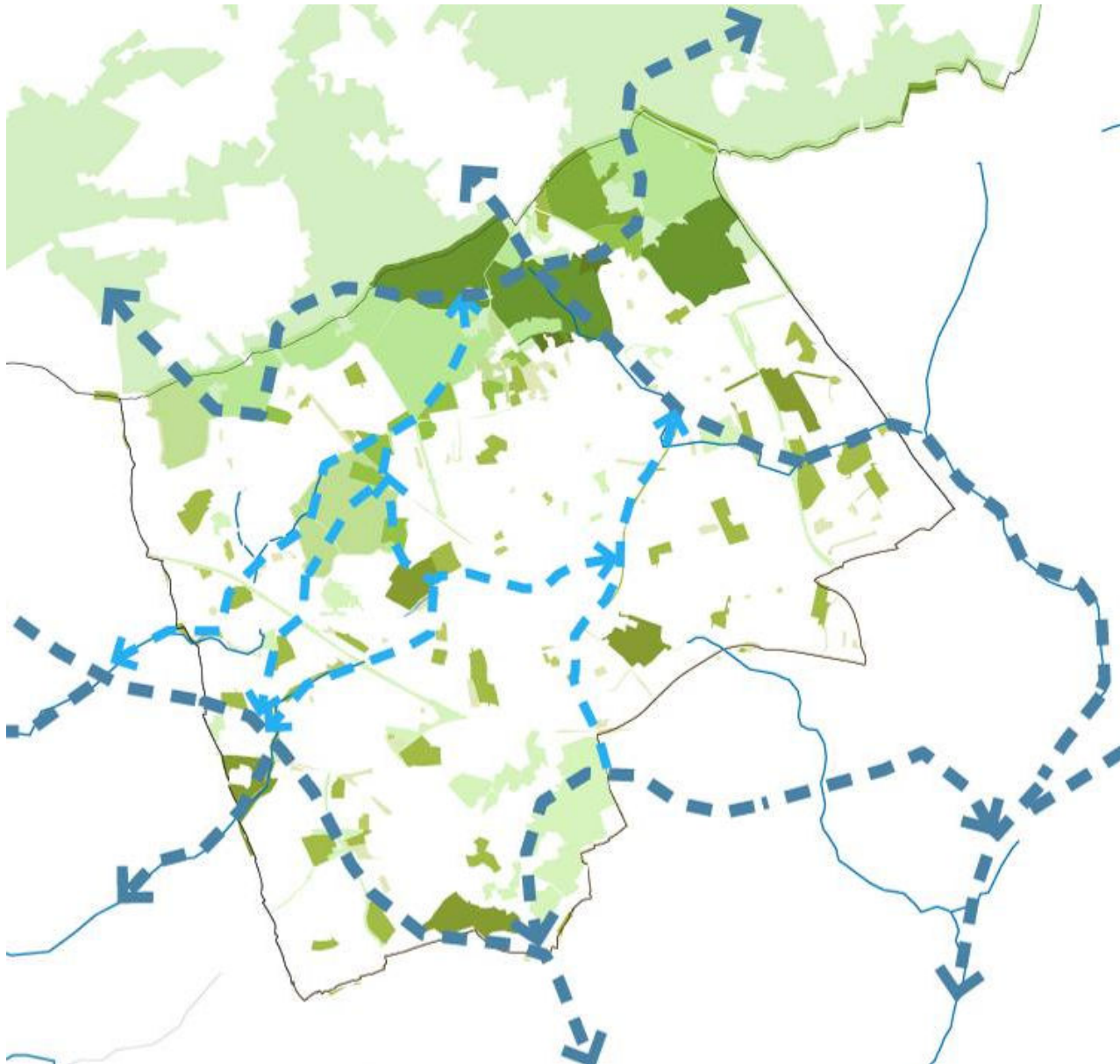
Street trees have been selected in many cases for ornamental rather than ecological value.

Strategic Opportunities / Supporting growth



- Supporting growth by promoting Harrow's profile as a Green Belt Borough, 15 minutes to central London.
- strengthening connections for walking and cycling via green infrastructure to the green belt within the Borough and beyond.
- Raising the profile of Harrow's green spaces and the concept of a linked green grid.
- Increasing the ecological quality & variety in Harrow's green spaces by making more of rivers and streams, and encouraging diverse management regimes
- Increasing public access to private land, particularly in areas of deficiency, and to make strategic links.

Strategic Opportunities / Connections



- Supporting growth by promoting Harrow's profile as a Green Belt Borough, 15 minutes to central London.

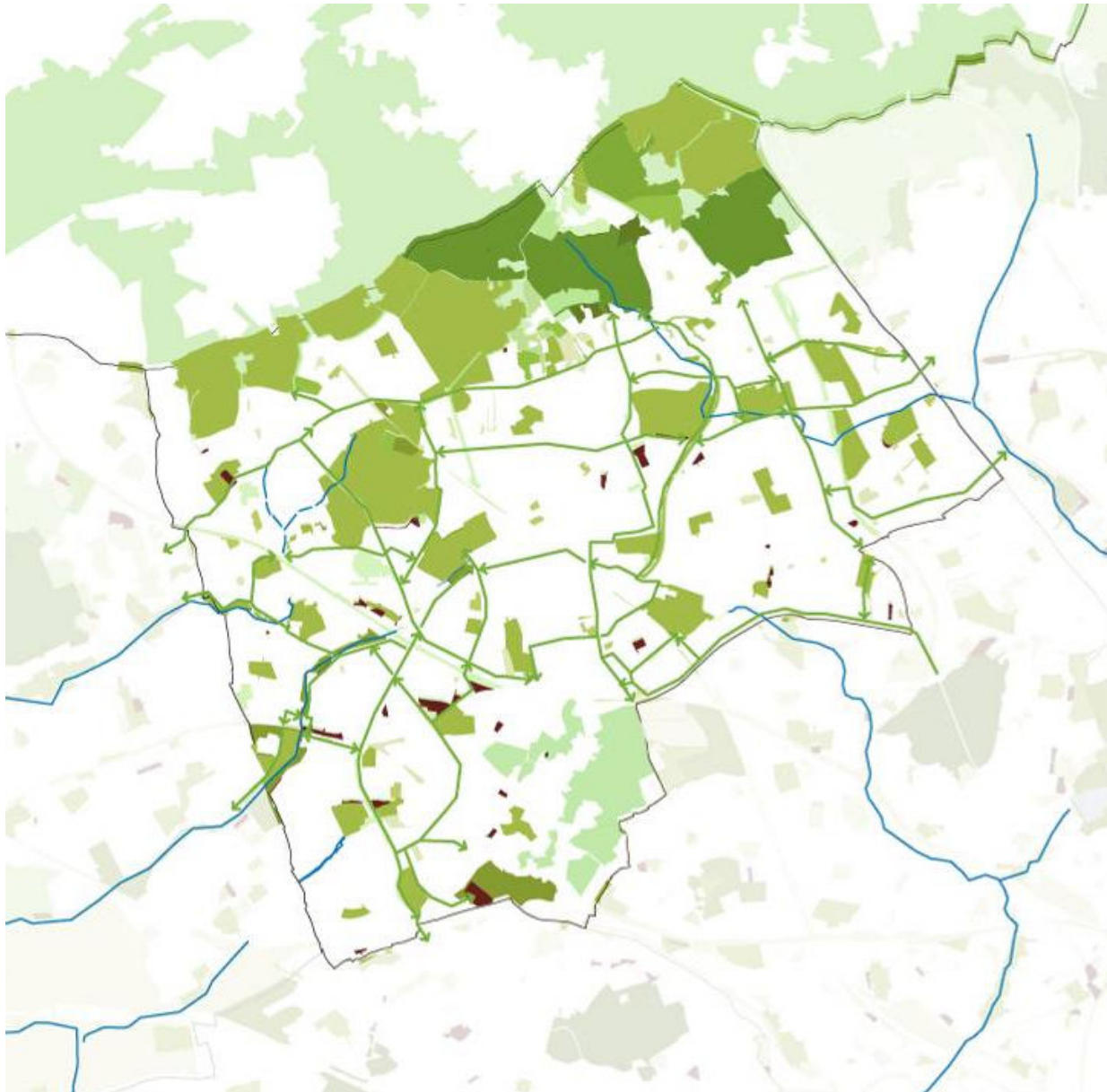
- Strengthening connections for walking and cycling via green infrastructure to the green belt within the Borough and beyond.

- Raising the profile of Harrow's green spaces and the concept of a linked green grid.

- Increasing the ecological quality & variety in Harrow's green spaces by making more of rivers and streams, and encouraging diverse management regimes

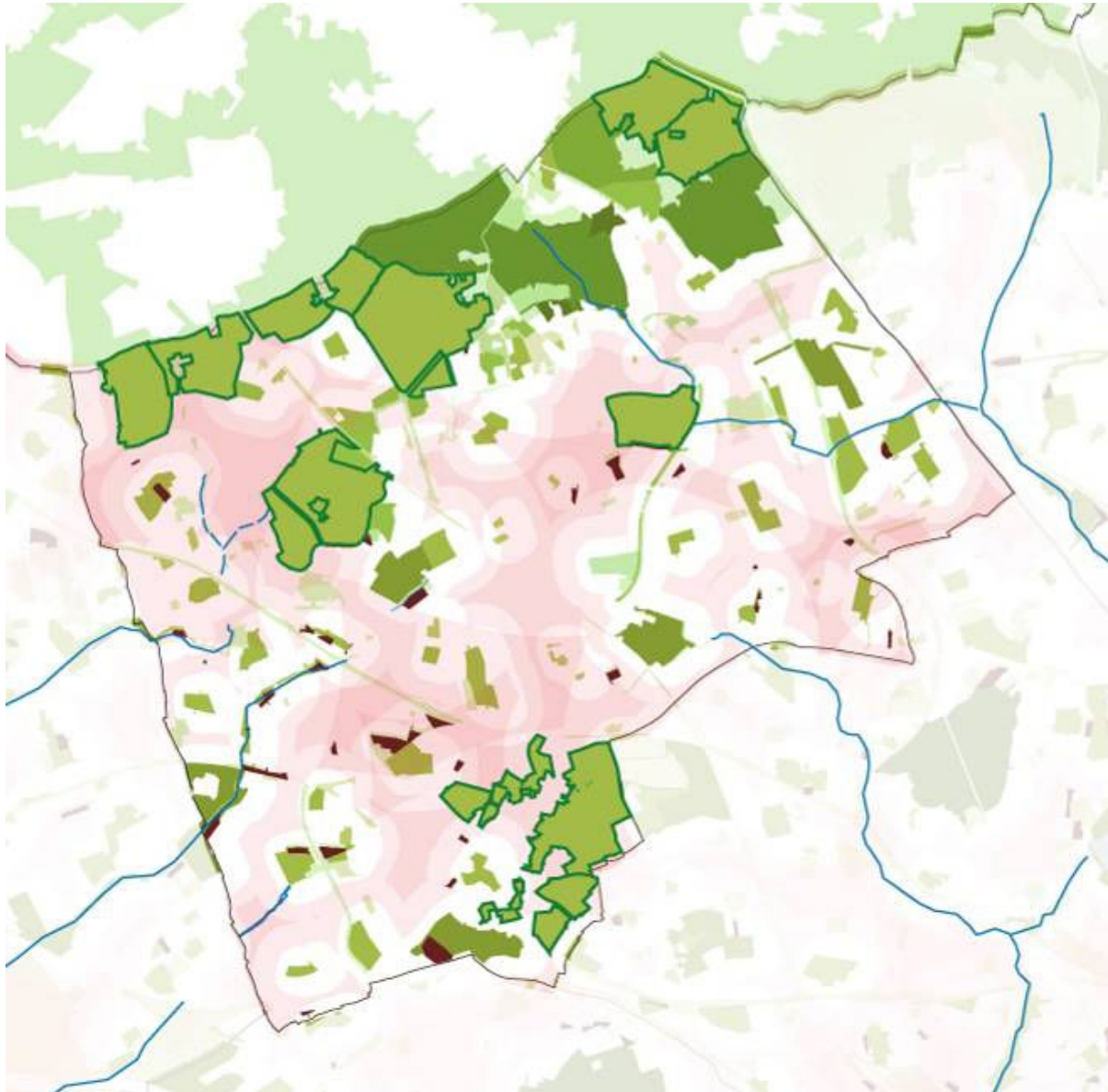
- Increasing public access to private land, particularly in areas of deficiency, and to make strategic links.

Strategic Opportunities / Ecological diversity



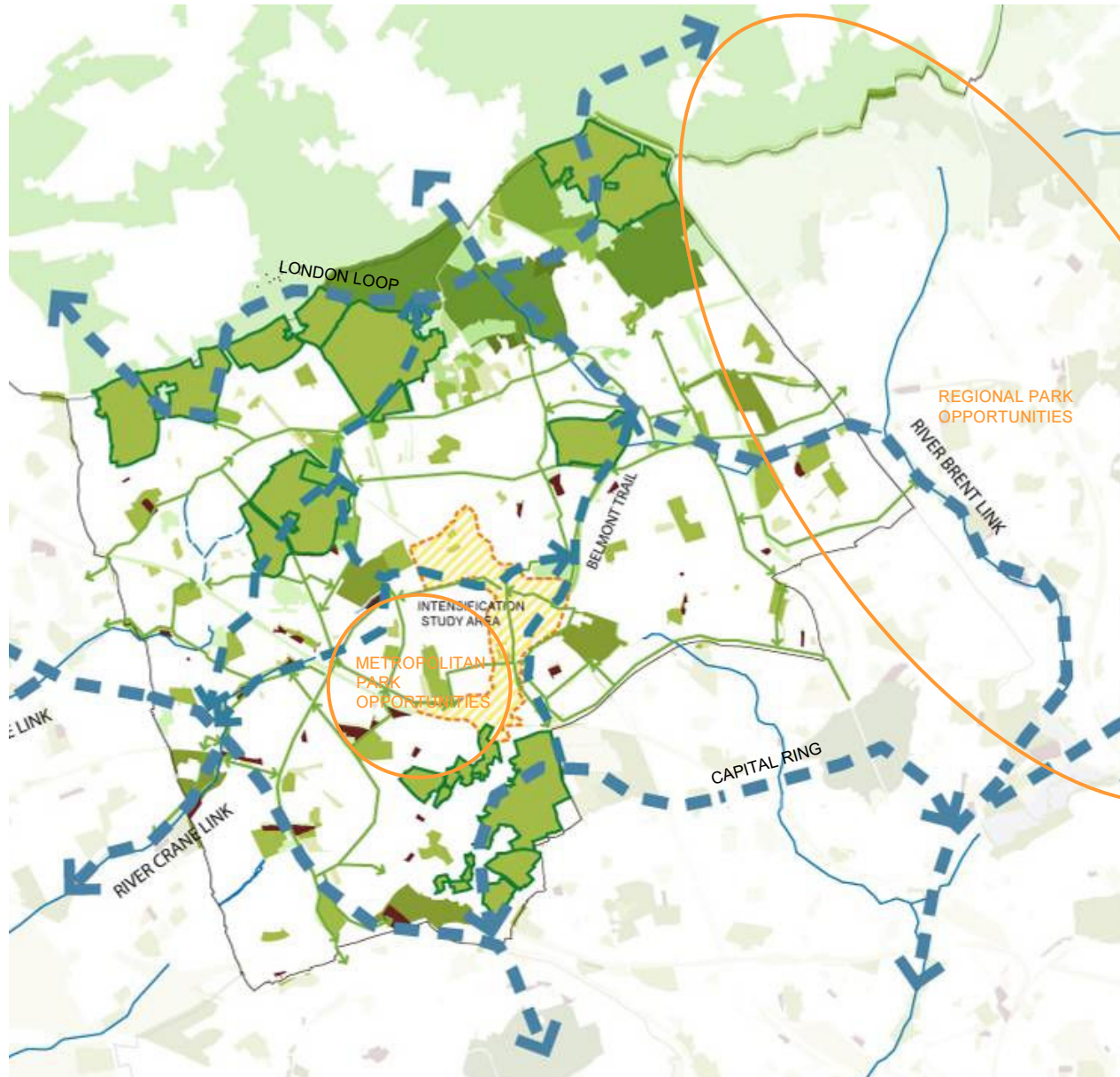
- Supporting growth by promoting Harrow's profile as a Green Belt Borough, 15 minutes to central London.
- Strengthening connections for walking and cycling via green infrastructure to the green belt within the Borough and beyond.
- Raising the profile of Harrow's green spaces and the concept of a linked green grid.
- Increasing the ecological quality & variety in Harrow's green spaces by making more of rivers and streams, and encouraging diverse management regimes
- Increasing public access to private land, particularly in areas of deficiency, and to make strategic links.

Strategic Opportunities / Public access



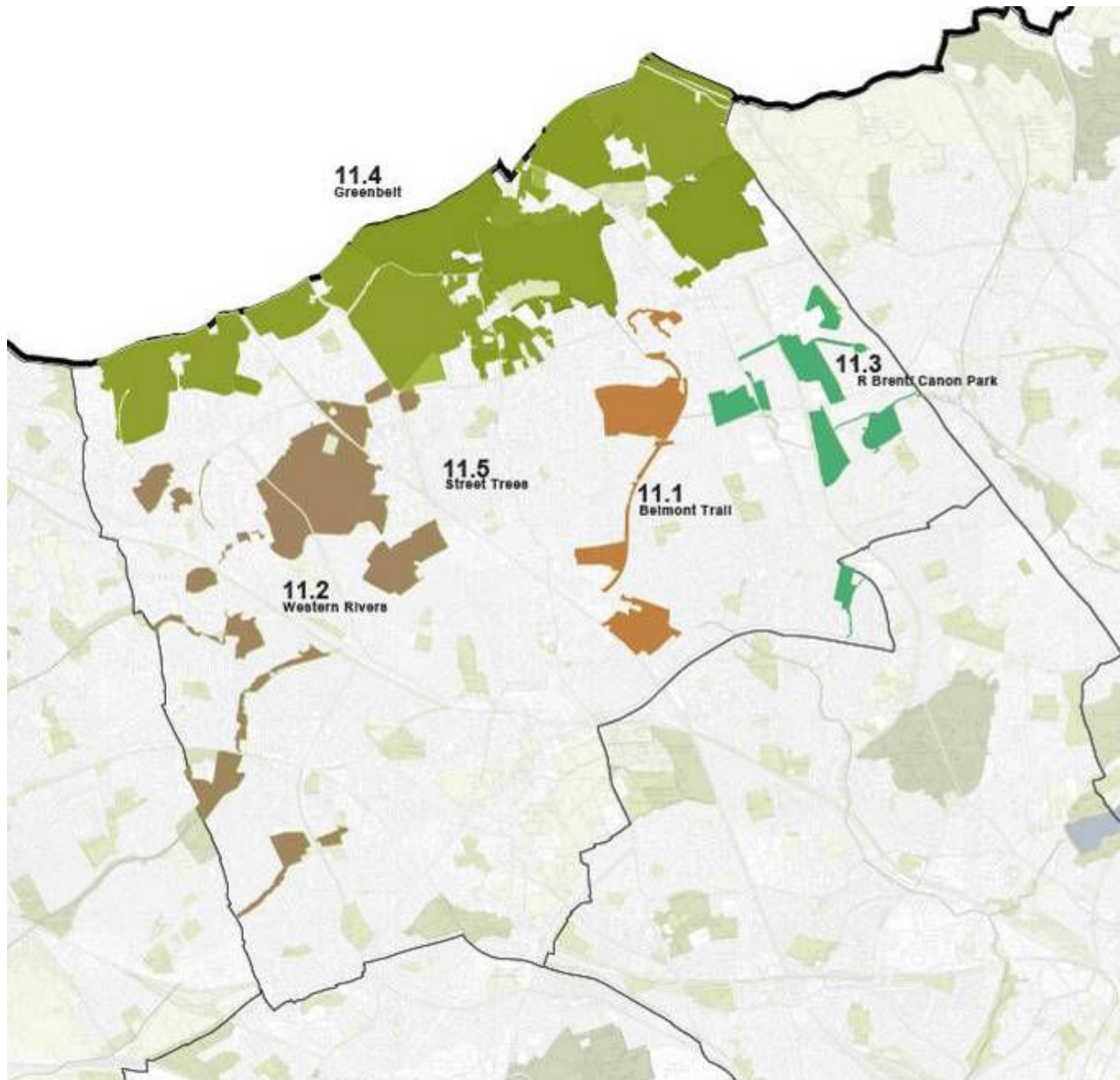
- Supporting growth by promoting Harrow's profile as a Green Belt Borough, 15 minutes to central London.
- Strengthening connections for walking and cycling via green infrastructure to the green belt within the Borough and beyond.
- Raising the profile of Harrow's green spaces and the concept of a linked green grid.
- Increasing the ecological quality & variety in Harrow's green spaces by making more of rivers and streams, and encouraging diverse management regimes
- **Increasing public access to private land, particularly in areas of deficiency, and to make strategic links.**

Vision for Harrow Green Grid



- Supporting growth by promoting Harrow's profile as a Green Belt Borough, 15 minutes to central London.
- Strengthening connections for walking and cycling via green infrastructure to the green belt within the Borough and beyond.
- Raising the profile of Harrow's green spaces and the concept of a linked green grid.
- Increasing the ecological quality & variety in Harrow's green spaces by making more of rivers and streams, and encouraging diverse management regimes
- Increasing public access to private land, particularly in areas of deficiency, and to make strategic links.

Emerging Projects 1



11.1 BELMONT TRAIL

Completion of pedestrian and cycle path linking central Harrow with the Greenbelt.

11.2 WESTERN RIVERS

Manage waterways to increase biodiversity and encourage wider recreational use by strengthening links to the Greenbelt and local destinations.

11.3 RIVER BRENT/CANON PARK

Biodiversity works and path network along Edgware Brook and in adjacent open spaces.

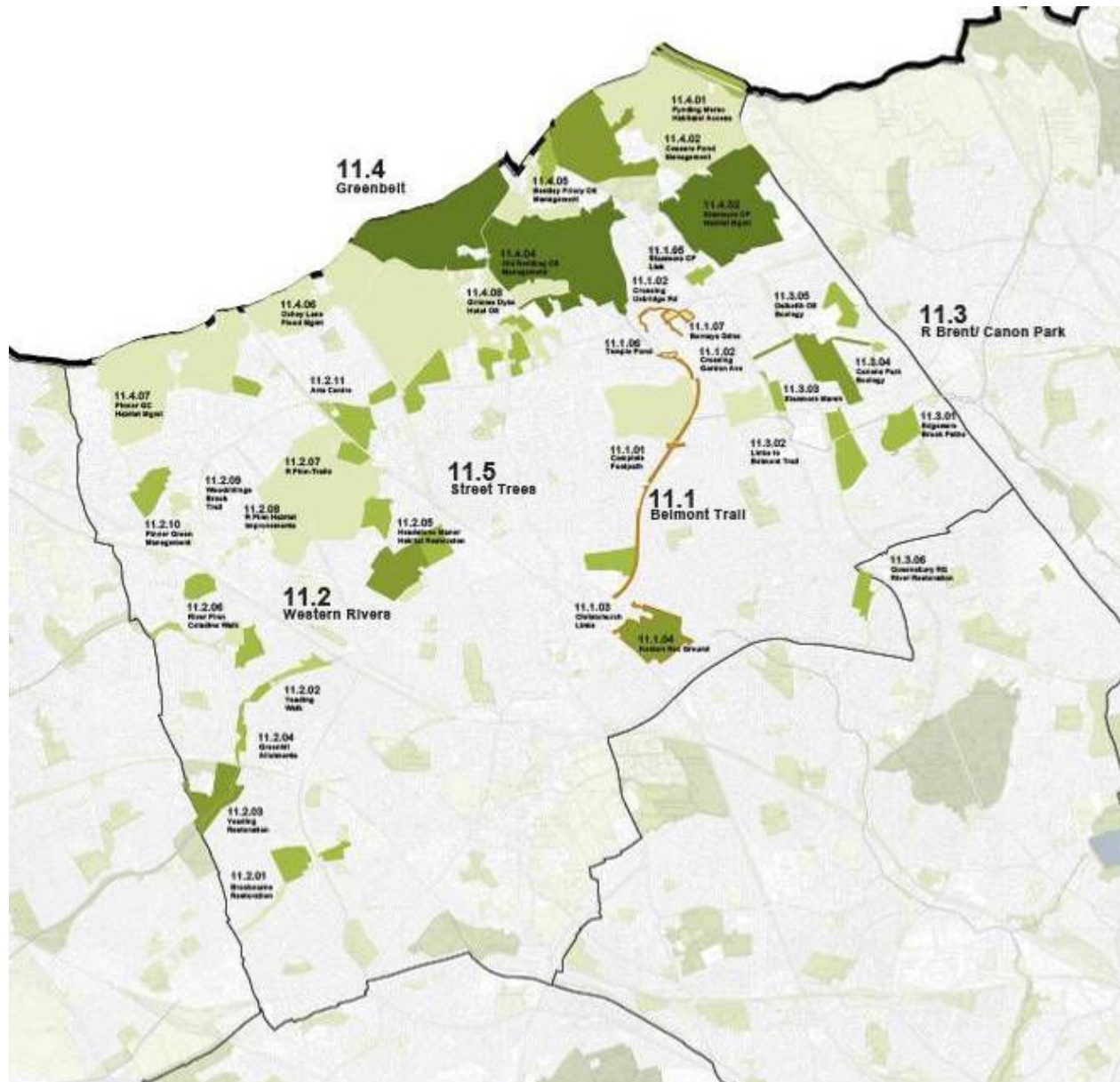
11.4 GREENBELT

Management plans and projects addressing biodiversity

11.5 TREE PLANTING

Extensive borough-wide planting programme, with visual and ecological value.

Project definition



11.1 BELMONT TRAIL

Completion of pedestrian and cycle path linking central Harrow with the Greenbelt.

11.2 WESTERN RIVERS

Manage waterways to increase biodiversity and encourage wider recreational use by strengthening links to the Greenbelt and local destinations.

11.3 RIVER BRENT/CANON PARK

Biodiversity works and path network along Edgware Brook and in adjacent open spaces.

11.4 GREENBELT

Management plans and projects addressing biodiversity

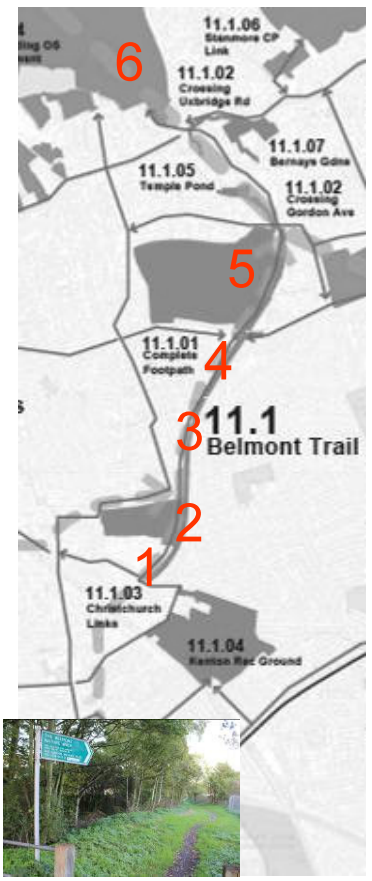
11.5 TREE PLANTING

Extensive borough-wide planting programme, with visual and ecological value.

Project Identification List

Project number	Project name	Strategic project priority No.	Borough / Locality	Project description, status and next steps	Project size (ha / m)	Project owner	Associated programmes	Identified delivery capacity Delivery agency	Total cost	Funding in place
11.1.01	Belmont Trail (Christchurch Road Harrow to Bentley Priory Open Space)		1 Harrow	COMPLETE PEDESTRIAN & CYCLE LINK TO GREENBELT / MANAGE FOR HABITAT DIVERSITY Green Corridor pedestrian and cycling connection and wildlife corridor on Belmont (deused Railway Line, northwards from Christchurch Avenue to Belmont Circle. Belmont Trail footpath improvements Belmont Circle to Stanmore Golf Course. Vegetation/rubbish clearance works adjacent to Stanmore Golf Course to link to Motrose Walk. Funding for some work from LB Harrow and TL as part of Cycling on Greenways, working on Belmont line to link new linear open space. Possible land acquisition or negotiation of link route. Track in Wolverton Road area tree covered (north end of golf course), land search for ownership, adjacent to substation to enable connection of Belmont Trail and discussion with EDF for possible route past substation. Tree, shrub and vegetation clearance, work to control Japanese Knotweed and now planting. Possible negotiation with Stanmore Golf Course for linking footpath route and renew degraded fence if required. Motrose Walk to north, tree clearance at south entrance and opening up trees to increase light and open up overgrown footpath route, footpath works to reduce gradient of access to north entrance.				Cycling on Greenways, Suktans		
11.1.02	Links at north end of Trail to Greenbelt, Old Lodge Road and Stanmore Country Park		34,96 Harrow	INSTALL LUXBRIDGE RD and GORDON STREET CROSSINGS, STREET TREE PLANTING, SIGNAGE Old Lodge Way infill in spaces between existing street tree planting to act as Green Grid connection for Bentley Priory Open Space to Stanmore Park. Signage and tree planting where possible in Stanmore Town Centre to act as gateway to the Green Grid connecting Stanmore Park to Stanmore Country Park, linking Rectory Lane, Bernays Gardens, Ameri Lodge development opportunity, to form green link Stanmore Broadway to Stanmore Recreation Ground and Stanmore Country Park.						
11.1.03	Links at south end of Trail to Harrow Town Centre, Byron Recreation Ground and Kenton Park		37,60 Harrow	ESTABLISH ROUTE ALONG STREETS, TREE PLANTING, SIGNAGE Tree lined streets in Christchurch Avenue (part) - Kenmore Avenue to act as gateways to the Green Grid connecting Byron Recreation Ground / Belmont Trail to Kenton Recreation Ground. Crossing point on Christchurch Avenue for safer routes to school and pedestrian movement to link to Priarhead and Elmgrove First and Middle Schools and to connect with Belmont Trail to Kenton Recreation Ground and Byron Recreation Ground and Harrow Leisure Centre. CONSIDER DIRECT LINK TO CEMETERY BYRON ROAD						
11.1.04	Kenton Recreation Ground		11 Harrow	WORKS TO IMPROVE ECOLOGICAL DIVERSITY, GREEN PARK USE AND PATHLINKS TO BELMONT TRAIL. Kenton Recreation Ground is the opportunity to create and develop a green communications hub, linking up with the town centre, commercial areas, Kenton and Wealdstone. Landscaping and access improvements to encourage more people to use the public park. Improve cycle links between Kenton, Harrow Town Centre and Belmont. Construct a new footpath round the outside of the park to provide a clear through route for pedestrians and cyclists, planting trees and shrubs in the park. Bridge, improve safety and visibility for park users. Focus on community links, education and horticulture. Establish a youth horticulture programme using existing Larches Trust, horticultural charity and linking to existing allotments. Existing bowls club to be refurbished for use by Larches Trust. Deculvert Wealdstone Brook within park, water course large diameter, remove pipes, construct attenuation ponds to slow water flow and reduce flooding issues of Wealdstone Brook in Harrow and Preston Road and The Mill in Brent. Contamination issue of existing land fill material in the park, any removal required to be carried away to special					Deculverting and water management £5,000,000 approx. and park works £2,000,000 approx	
11.1.05	Stanmore Park		95 Harrow	CONSIDER MANAGEMENT FOR BIODIVERSITY, replacement of dead trees.						
11.1.06	Temple Pond		85 Harrow	WORKS TO IMPROVE BIODIVERSITY.						
11.1.07	Bernays Gardens		77 Harrow	IMPROVE LINKS THROUGH TO BELMONT TRAIL Consider potential future uses of Coeman's Cottage and Cowsheds, including repair and redevelopment opportunities. Lide wall enclosure, brickwork repairs, replacement gate design, formation of second access point through wall. Consider requirements for major restoration and improvements to public gardens.						
11.2.01	River Crane: The Roxbourne and Roxbourne Return Arm		24 Harrow	MANAGE RIVER TO IMPROVE BIODIVERSITY AND INCREASE USE Improve very poor water quality of the stream. The Roxbourne flowing in a concrete channel through Newton Park West, redefine the channel, construct timber revetment, shallow scrape of channel, native planting and encourage marginal growth, create new habitats and biodiversity. In Newton Farm Ecology Park open up and clear vegetation around The Roxbourne stream. The two parks and river in with Newton Park and Newton Park Ecology Centre (Site of Local Importance for Nature Conservation) and improvement works to the river and river banks would improve the park and increase wildlife habitats. Improve poor water quality, strip vegetation and improvement works to discourage fly tipping round Roxbourne Return Arm, south of Leamer Drive. New revetment on river banks, offshore filter beds, establish reed beds, increase water flow. Create new wetland habitat for biodiversity						
11.2.02	Yeading Walk trail system (Roxbourne Park to Headstone Manor/Pinner?)		5,64, 85 Harrow	Extension of Yeading Walk (Yeading Brook Site of Borough Importance for Nature Conservation Grade II) to provide a pedestrian link from North Harrow station to Village Way and continuing to Roxbourne Park. Improve entrance treatment at Northumberland Road, check path condition and refurbish and improve paths, negotiate access with allotment holders for pedestrian link through allotments, install bridges, investigate feasibility of lighting installation and areas with public access to be opened up. Signage and street tree planting to link Village Way to Roxbourne Park and Roxbourne Rough. Construct steps to improve public access into Roxbourne Rough Nature Reserve (Site of Borough Importance Grade II). Feasibility study, Design, Consultation and Implementation of Cycling on Greenways study, to introduce cycle links through Roxbourne Park, linking to roads and cycle routes surrounding park.				LB Harrow	£21,500	
11.2.03	R Crane: Yeading Brook Biodiversity		9,10 Harrow & Hillingdon	MANAGE RIVER TO IMPROVE BIODIVERSITY AND INCREASE USE. Roxbourne Park is the opportunity to create a green communications hub, linking London Borough of Harrow and neighbouring Hillingdon. Feasibility study required to look at the development, management and maintenance of this park. Improvements to infrastructure, entrances, features, playground improvements, new landscaping and planting. Remove Yeading Brook culvert, open out Brook and install a bridge, footpath clearance and improvements, thin out tree line and vegetation, remove some willows, re-establish footpath, signage, encouraging areas for wildlife, increasing the activity in the park to provide natural increase in surveillance, clearance of Japanese Knotweed. Roxbourne Rough, enhancing and managing the ecology of the site, improve entrances and access to the site to encourage more people to use the park. Higher profile for volunteer warden, from Harrow Nature Conservation Forum.						
11.2.04	Greenhill Stream		22 Harrow	Improve water quality of Greenhill Stream, flowing through part Village Way allotment (land adjacent to High Wopple and allotments adjacent to Imperial Drive) The Drive. Create reed beds.						£21K - Management Plan of Roxbourne Rough
11.2.05	Headstone Manor Recreation Ground		23,74, 75 Harrow	RIVER RESTORATION Headstone Manor, north. Project to deculvert and divert river flow in part and construction new culvert in part to Yeading Brook West Headstone Park Branch, reduce siltation and pollution, fish stocking and increase water quality of the moat, create new habitats, establish new reed beds, new planting area, improve biodiversity and visual amenity. Vegetation management around moat to open up views to and from Headstone Manor. Headstone Manor Recreation Ground south, improvements to (Site of Borough Importance for Nature Conservation, Grade II) open up historic woodland and improve entrance area and sense of arrival. Complete reinstatement of playing fields following remediation works to contaminated sit.						
11.2.06	River Pinn (Colne): Celandine Way links		8,18,1, 9, 67 Harrow & Hillingdon	Cross borough link of Celandine Walk along River Pinn, back to Pinner. Clearance, footpath improvement works, investigate encroachment of gardens into allotments. Open footpath, links at Queensway Pond along the River Pinn and along Woodbridge Brook. Signage to ensure legible connections between West House, Pinner Memorial Park and street connectors to Headstone Manor and improvement of access to heritage resource in town centre.			management plan			
11.2.07	R Pinn: Pinn Park Farm corridor		17 Harrow	River Pinn adjacent to Parkview allotments and St Thomas' Drive impounding reservoir. A bridge had been installed. Opportunity for joint working with Environment Agency to improve the blue river corridor network, open out allotment area, improve biodiversity inaccessible area, remove dense vegetation, create riverside walk and improve pedestrian accessibility. Include Woodbridge Brook and River Pinn. Improve access for school children for outdoor studies of biodiversity, mini-beasts						
11.2.08	Pinn Park Farm management			INCREASE BIODIVERSITY						
11.2.09	1 - 110 Mill Farm Close, Pinner		86 Harrow	LINKS THROUGH ARTS CENTRE TO GREENBELT. Maintenance / upgrade of Harrow Arts Centre				Catalyst Communities Housing Association Ltd	£15K - S 106	
11.2.10	Pinner Green management		21 Harrow	Implementation of environmental improvements identified in the existing Grim's Ditch at Pinner Green management plan, Grim's Ditch and Pinner Green (Site of Borough Importance Grade II). Possibility of English Heritage support and funding to manage Grim's Ditch.				Catalyst Communities Housing Association Ltd	£15K - S 106	
11.3.01	Chandos Recreation Ground to Edgware Road pedestrian link		2 Harrow	Improve footpath connection alongside the Edgware Brook, between Chandos Recreation ground and Edgware Road. Open up route, vegetation removal, clear and relay footpath, river improvements opening up the timber concrete channel.						

Project theme - The Belmont Trail



Next Steps

- Cabinet approval for consultation
- CLG/Managers forum presentations - December
- Capital/funding bids for projects 2011/12
- Targeted consultation with stakeholders
December to March
- Revised Green Grid prepared and adopted
March/April 2011
- Project and programme alignment from April
2011

Harrow Green

Grid

All

London

Green

Grid

All London Green Grid - Methodology

