

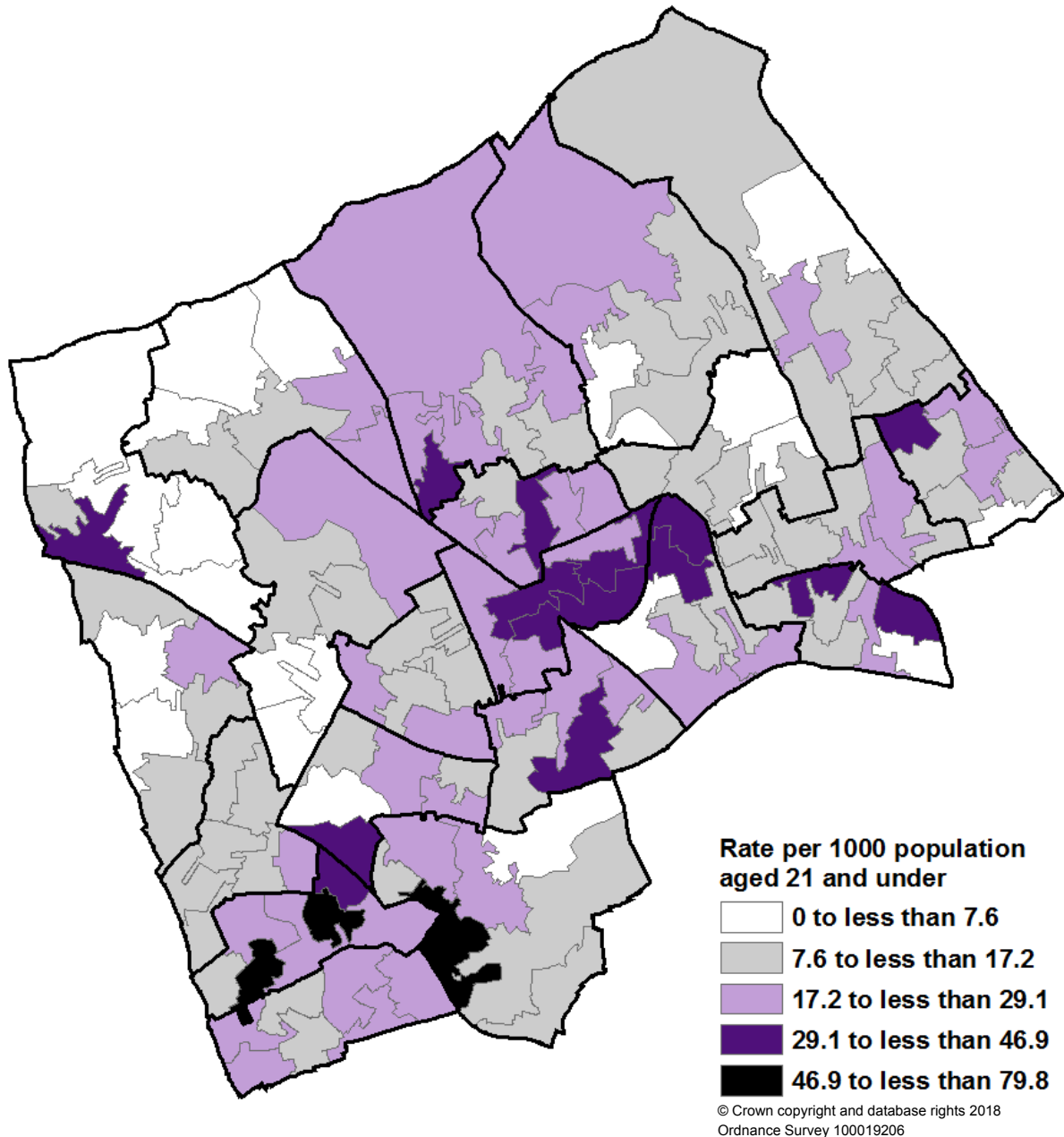
Harrow Vitality Profiles

2018 - 2019

Social Care

Children Provided with Services

Source: DfE Children in Need Census, Crown Copyright



- 3,990 children and young people were known to Children's Social care teams in Harrow, in the twelve month period from 1st April 2017 to 31st March 2018
- As of 31st March there were 1,505 children and young people still requiring services, a rate of 22.9 per 1,000 persons aged 21 and under
- 87.7% of support for children and young people is provided within the borough
- Children and young people provided with services are concentrated in the centre of the borough and in the south-west

Children Provided with Services, March 2018

Source: DfE Children in Need Census, Crown Copyright

This data comes from the Children in Need Census, a return by local authorities to the Department for Education (DfE). It covers all children up to and including the age of 21, receiving a service (beyond referral stage) from Children's Social Care Services. This includes children looked after, those supported in their families or independently, and children who are the subject of a child protection plan (including unaccompanied asylum seeking children, those leaving care, children with disabilities and other children in need). The return includes only those children known to Children's Social Care - not all children in the borough who might be in need.

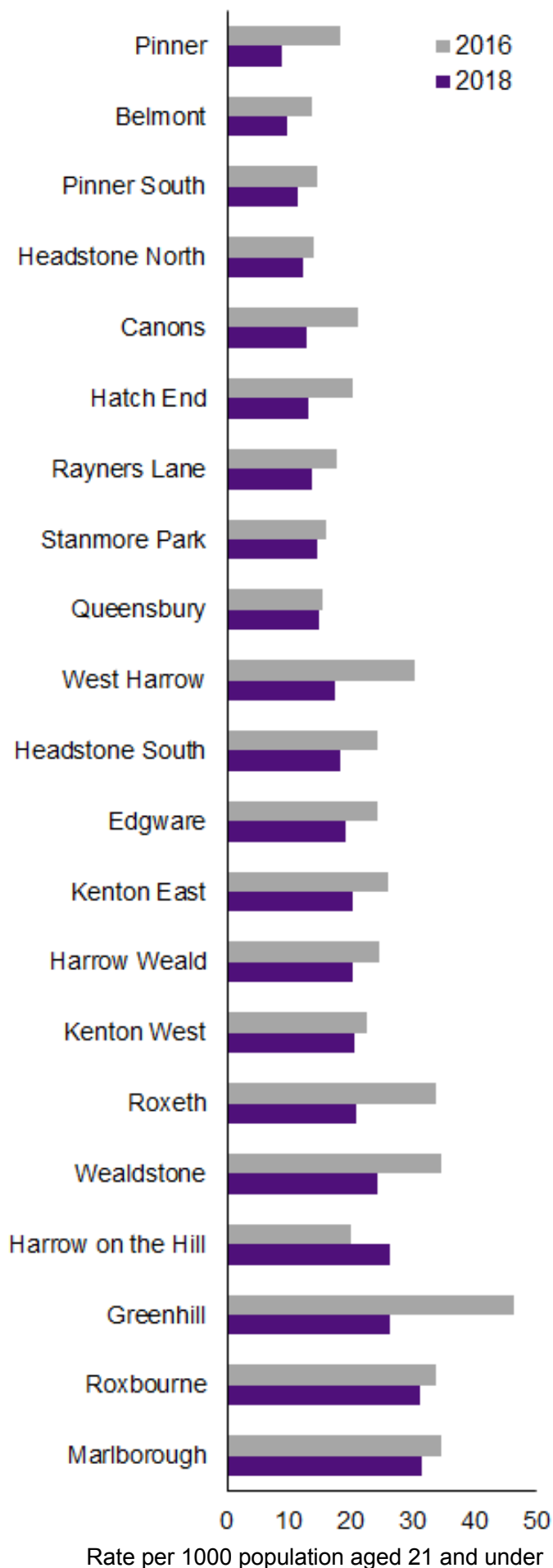
The distribution of children provided with services varies significantly throughout Harrow, with ward rates ranging from 31.5 per 1,000 persons aged 21 and under in Marlborough down to 8.9 per 1,000 in Pinner. Four other wards (Greenhill, Harrow on the Hill, Roxbourne and Wealdstone) had rates greater than 24 per 1,000 persons aged 21 and under, and three other wards (Belmont, Headstone North and Pinner South) had rates below 13 per 1,000.

At LSOA level rates range from 79.7 per 1,000 persons aged 21 and under in one LSOA in Harrow on the Hill (the LSOA which has the Grange Farm housing estate), down to a rate of 0 per 1,000 in four LSOAs in Harrow on the Hill (the LSOA that includes Harrow School), Hatch End, Pinner and West Harrow wards. Six other LSOAs in Edgware, Kenton East (2), Kenton West and Roxbourne (2) had rates greater than 40 per 1,000 persons aged 21 and under.

There were 2,441 new referrals during 2017/18, the remaining were already receiving a service making the year total of 3,990. During 2017/18 there were 551 active child protection plans. As at 31st March 2018 there were 232 active child protection plans.

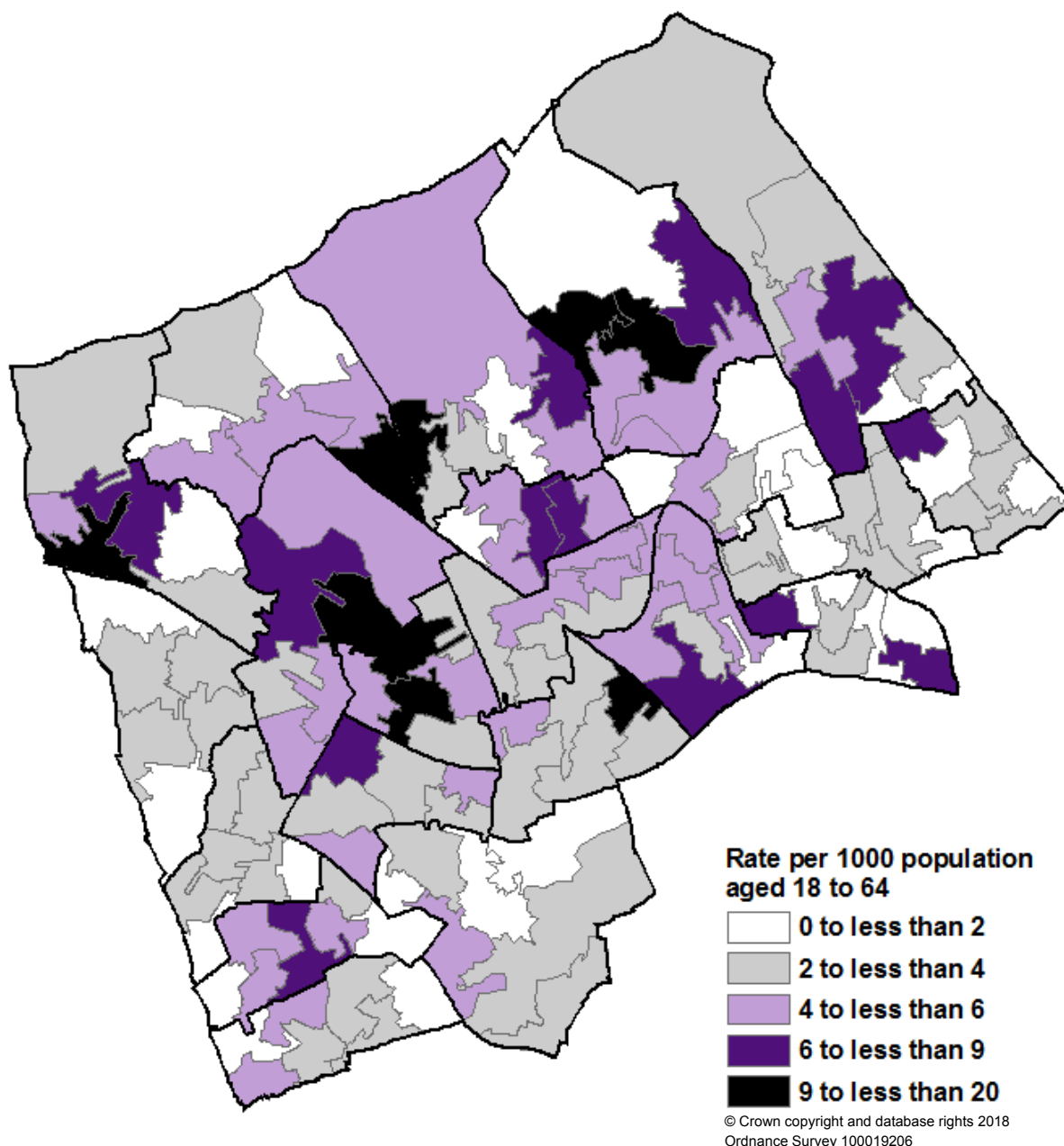
Harrow council looked after 318 children during the year. As at 31st March 2018 there were 159 children being looked after.

Figures used in the ward data and LSOA mapping are based on geocoded data. Not all data was able to be coded to an address, 1,439 individuals were successfully coded out of 1,505 known children in need.



Adults Provided with Services

Source: Harrow Council



- 1,475 people aged 18 to 64 were receiving long term support from Adult Services in March 2018
- The number of adults aged 18 to 64 receiving care has declined slightly since March 2015
- A total of 292 clients aged 18 to 64 received care outside of the borough
- The LSOAs with the highest rates are located in the northern half of the borough, however overall ward rates show a pattern of the north (more specifically the north-western quarter of the borough) having the highest rates of adults aged 18 to 64 requiring services

Adults Provided with Services, March 2018

Source: Harrow Council

At a ward level there is a substantial variation in the distribution of adults who were being provided with care services in Harrow, with ward rates ranging from 7.9 per 1,000 adults (aged 18-64) in Stanmore Park down to 2.2 per 1,000 adults (aged 18-64) in Pinner South. Stanmore Park is followed by Pinner and Headstone South wards with rates of 6.9 and 5.9 per 1,000 adults (aged 18-64) respectively. Along with Pinner South three other wards have a rate below 3 per 1,000 adults (aged 18-64), these are Queensbury (2.4), Rayners Lane (2.9) and Roxeth (2.9).

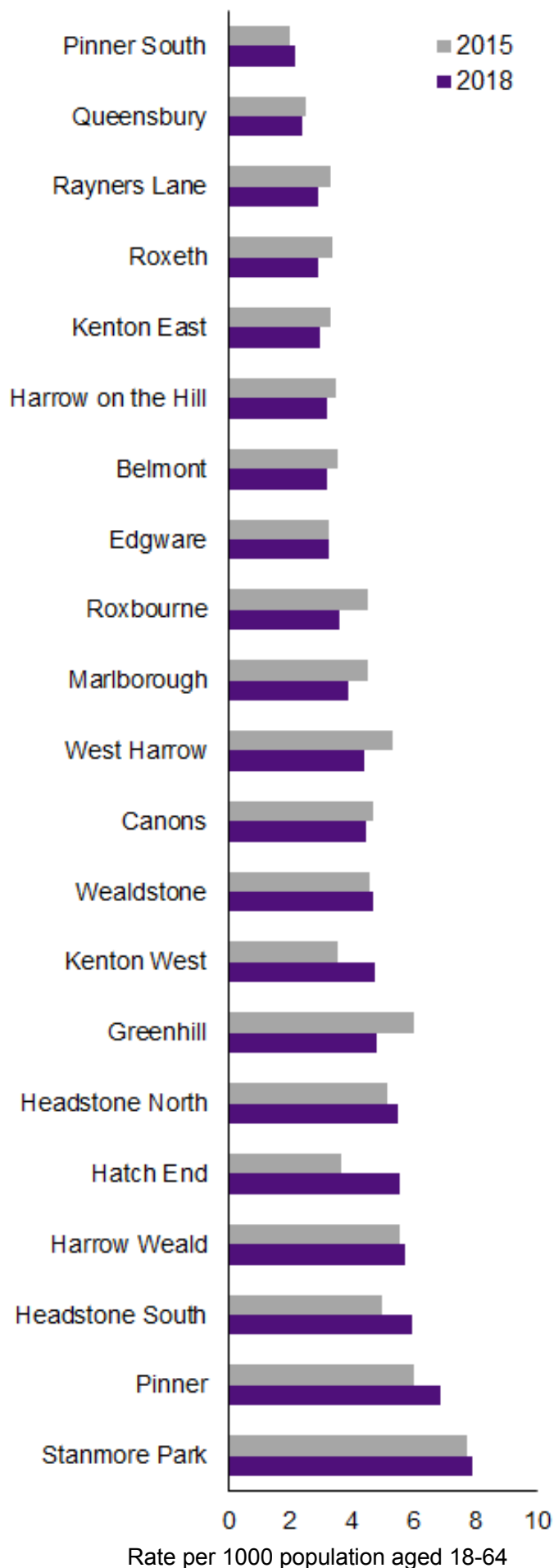
In the 18 to 64 group there were 141 people being provided with care services while living in a residential home and 21 people while living in a nursing home. Whereas, 766 clients who are in receipt of care services are still living in the community.

LSOA rates for adults receiving some kind of support from Adult Services varied from no adults receiving support in three LSOAs located in Belmont, Hatch End and Kenton West to 19.5 per 1,000 adults (aged 18-64) in a LSOA in Pinner ward. There were two other LSOAs with a rate greater than 12.5 per 1,000 adults (aged 18-64), located in Stanmore Park and Greenhill with rates of 18.1 and 17.6 respectively.

There are distinct clusters of need in Canons, Hatch End, Harrow Weald, Headstone North, Headstone South, Pinner, Stanmore Park wards. These are generally found in areas with higher levels of social housing. There are nine LSOAs across six wards in the highest quintile, with the most in Headstone South where there are three LSOAs with a rate greater than 9 per 1,000 adults (aged 18-64).

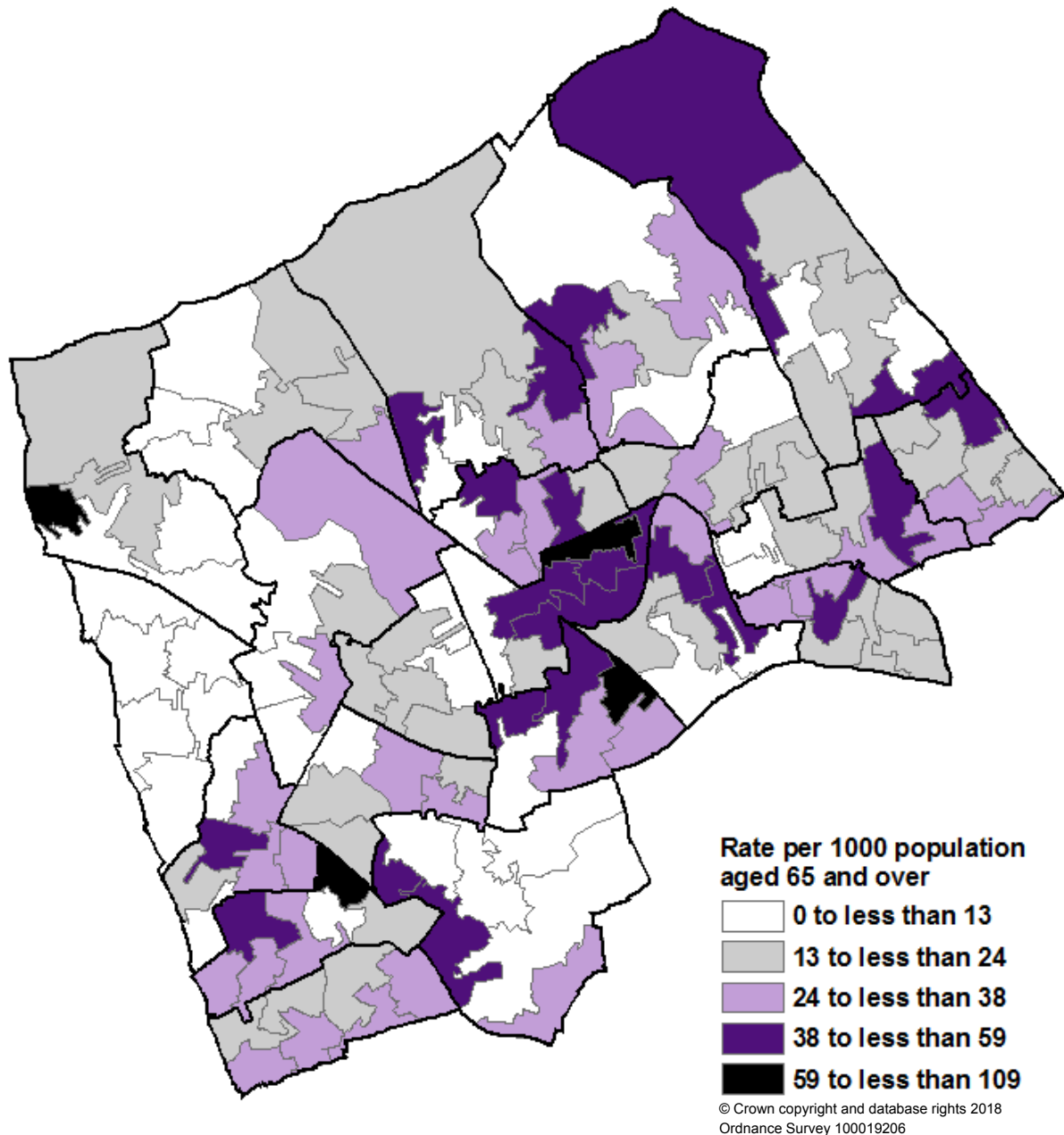
These figures cover the 18-64 year old population, receiving support from Adult Services to live independently in their own homes or in care. This includes people with a range of physical, sensory or learning disabilities, or mental health problems, who receive home care, meals on wheels, day care, special equipment, and other related services. It includes those in residential or nursing care. This indicator only includes those people known to Harrow's Adult Services and receiving support, so excludes other vulnerable people who might be in need.

Figures used in the ward data and LSOA mapping are based on geocoded data. Not all data was able to be coded to an address, 690 individuals were successfully coded out of 928 known adults.



Older People Provided with Services

Source: Harrow Council



- 1,553 older people, whose long term support is organised by Harrow Council were receiving support from Adult Services in March 2018, this is an increase of 11% since March 2015
- 4.1% of all Harrow's residents aged 65 and over were receiving some sort of care support
- 91% of care for older people is provided within the borough, compared to 87.7% in March 2015
- There are higher levels of need spread across the borough, although there are particular concentrations in the central, eastern and south-western parts of the borough

Older People Provided with Services, March 2018

Source: Harrow Council

At a ward level Greenhill, with 66, had the highest number of clients and the highest rate of older people who were being provided with care services in Harrow, with 44.2 per 1,000 residents (aged 65 and over) receiving some sort of support. Marlborough was not far behind with 65 clients and a rate of 43.2 per 1,000 residents (aged 65 and over).

Pinner South had the lowest rate with 9.6 per 1,000 residents (aged 65 and over) receiving a form of care (19 clients). Belmont, Hatch End, Headstone North, Headstone South and West Harrow also had a rate below 20 per 1,000 older residents.

In the 65 and over age group there were 239 people being provided with care services while living in a residential home and 178 people while living in a nursing home. Whereas, 1,114 clients who are in receipt of care services are still living in the community.

The highest ranked LSOA was in Greenhill, where 108.3 per 1,000 residents (aged 65 and over) were receiving some kind of support. The second and third highest rates were in Marlborough and Pinner wards with rates of 75.3 and 68.1 per 1,000 residents (aged 65 and over) respectively. Although there was only one LSOA with a rate greater than 100, there were in total nine other LSOAs with a rate of 50 and above located in Greenhill, Harrow Weald, Kenton East, Marlborough (2), Pinner, Rayners Lane, Roxbourne and Wealdstone.

There were 22 LSOAs with a rate below 10 per 1,000 residents (aged 65 and over) and three other LSOAs in Harrow on the Hill, Harrow Weald and Rayners Lane which had no persons over the age of 65 requiring long term support.

This indicator is a snapshot of older people (aged 65 and over) receiving home care, meals on wheels, day care, special equipment, and related services. It includes those placed in residential or nursing care, and may sometimes include couples living in the same household. This indicator only includes those people known to Harrow's Adult Services and eligible to receive care, so excludes other older people who might be in need.

Figures used in the ward data and LSOA mapping are based on geocoded data. Not all data was able to be coded to an address, 939 individuals were successfully coded out of 1,553 known 65 and overs.

