



**The Specified Public Places, London Borough of Harrow  
Public Spaces Protection Order 2024**

**This Order relates to Specified Public Places of the London Borough of Harrow, as listed and highlighted on the attached plan.**

1. In this Order:

**'Anti-Social Behaviour'** refers to section 59 (2) (a)-(b) of the Anti-Social Behaviour, Crime and Policing Act 2014 and means: activities carried out, or which are likely to be carried out, in a public space which have a detrimental effect on the quality of life those in the locality. This also means behaviour likely to cause harassment, distress or alarm to one or more other person.

**'The designated area'** refers to any public space to which the public or a part of the public has access (S 74(1) of the Anti-Social Behaviour, Crime and Policing Act 2014). This can be with payment, or with express or implied permission. The areas designated for this Order can be found in Appendices 1 & 2.

**'Authorised officer'** refers to: police officer, police community support officer, or any other person designated to enforce the Order by London Borough of Harrow. You can require any authorised officers to produce authorisation before enforcing the Order.

2. The London Borough of Harrow, in accordance with Section 59 (7)(a) of the Anti-Social Behaviour, Crime and Policing 2014, identifies the following activities in the designated areas, highlighted in this Order, as having had a detrimental impact on the quality of life of those in the locality, or it is likely that they will have such an effect

**3. Bentley Priory Nature Reserve and The Viewpoint shown on the attached plans ('the designated areas')**

- Bentley Priory Nature Reserve - Dog control areas
- The Viewpoint indecent behaviour and causing damage

Due to reports of these activities and behaviours, the Council is satisfied that the effect, or likely effect, of the activities is, or is likely to be, of a persistent or continuing nature and these activities are unreasonable and justify the restrictions imposed by the notice and that it is in all the circumstances expedient to make this Order for the purpose of reducing anti-social behaviour in a public place.

The requirements and prohibitions set out below will relate to the specific locations identified in the appendices.

The London Borough of Harrow, being thereby satisfied that the conditions in Section 59 of the Act have been met, hereby makes the following Order:

**4. Bentley Priory Nature Reserve and The Viewpoint**

As shown on the attached plans in Appendices ('the designated areas')

**Requirements - In the following specified public spaces within this designated area, you are required to:**

**4.1 Bentley Priory Nature Reserve - Dog control**

- a. Dogs must be on leads in Spring Meadow from 1 April to 31 July inclusive (marked on map appendix 1)

- b. Dogs must not enter or remain in any of the ponds or within watercourses within the areas marked in red (on map appendix 1)
- c. Dogs must be on leads in the area known as "Deer Path Corridor" (marked on map appendix 1)

#### **4.2 Viewpoint and Viewpoint Car Park - Engaging in indecent behaviours and causing damage.**

- a. Engaging in any indecent behaviours in the open or within a vehicle in the designated area.
- b. Causing damage by forcing vehicle entry/exit or driving over grassed areas in any part of the designated area without permission of the authority.

#### **5. Duration**

The Order comes into effect on 09 July 2024 and will be in effect for a period of three years, until midnight on 08 July 2024.

If there is need to do so, the Council may shorten, extend or vary the order at any time within the three years. If the Council wants to extend or vary the Order, they must consult appropriate community representatives, the police and owners of the affected land on the variation.

#### **6. Appeal**

If any 'interested person' (a person living in, working in, or regularly visiting the affected area) wishes to appeal this Order, they must do so on one of two grounds (s 66 of the Anti-Social Behaviour, Crime and Policing Act 2014):

- 1) The Council did not have the legal power to make the Order.
- 2) The Council did not follow all the requirements listed in Chapter 2 of the Anti-Social Behaviour, Crime and Policing Act 2014.

The interested person(s) must appeal the Order with an application to the High Court within six weeks of the Order being made.

#### **7. Information**

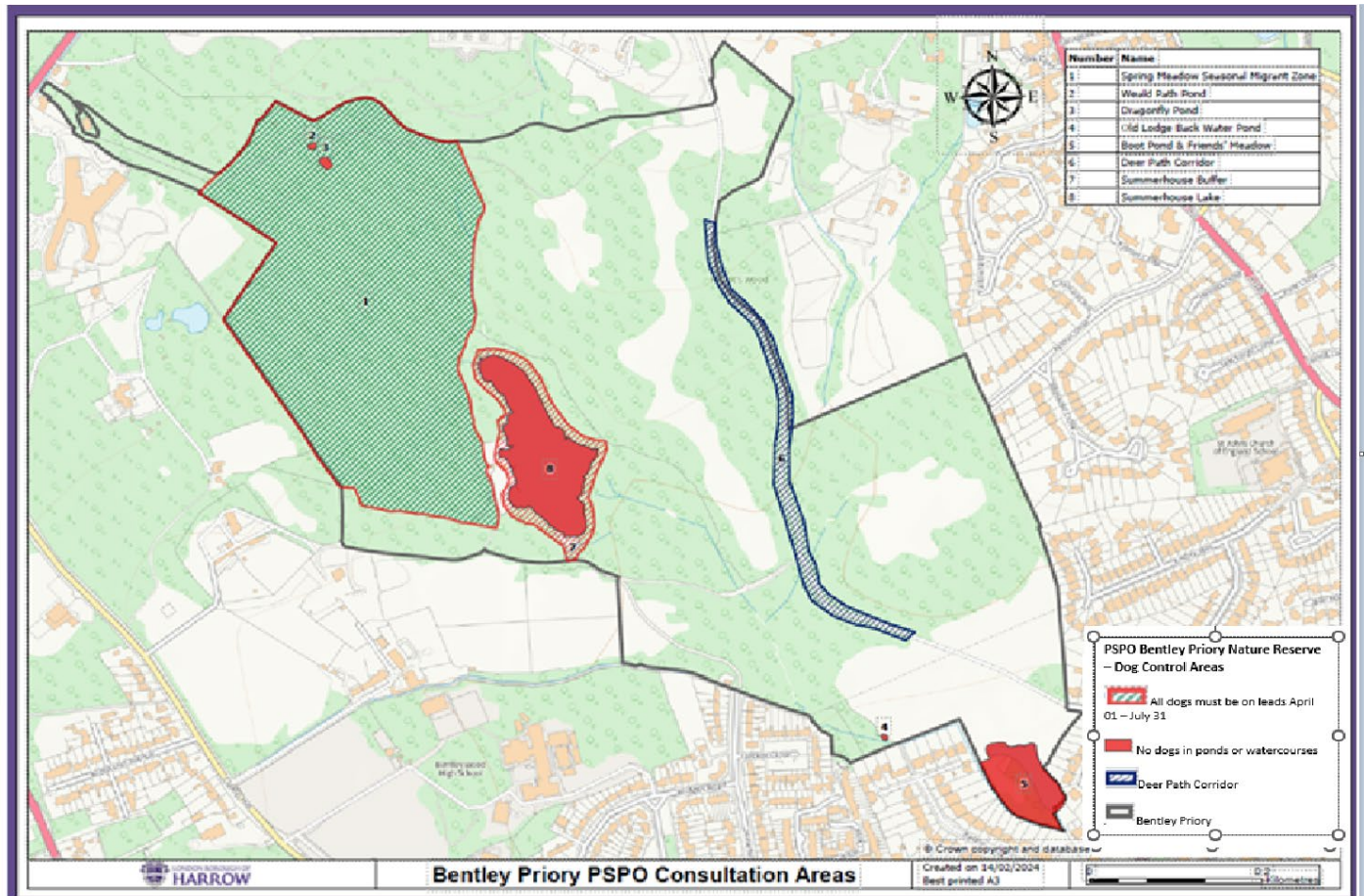
Further information about the PSPO and matters related within it, can be found at <https://www.harrow.gov.uk/environment-parks/public-spaces-protection-order>

#### **8. Appendices**

1 Dog control areas – Bentley Priory Nature Reserve

2 Designated Area – The Viewpoint

**Appendix 1**  
**Dog control areas – Bentley Priory Nature Reserve**



## Appendix 2

### Designated Area The Viewpoint

