

WILDLIFE AND COUNTRYSIDE ACT 1981 SECTION 53

THE LONDON BOROUGH OF HARROW

1969 DEFINITIVE MAP and STATEMENT

**The London Borough of Harrow Definitive Map Modification Order 2024
TRANCHE 1 (URBAN FOOTPATHS ON HARROW COUNCIL'S LAND)**

This Order is made by The London Borough of Harrow ("the Order Making Authority") UNDER SECTION 53 (2) (b) of the Wildlife and Countryside Act 1981('the Act') because it appears to the authority that the 1969 Definitive Map and Statement require modification in consequence of the occurrence of an event specified in section 53(3)(c)(i) of the Act namely, the discovery by the authority of evidence which (when considered with all other relevant evidence available to them) shows that rights of way which are not shown in the map and statement subsist or are reasonably alleged to subsist over areas of Council owned land in the area to which the map relates, being rights of way such that the land over which the rights subsist are public paths.

The Order Making Authority hereby order that:

1. For the purposes of the Order the relevant date is 7 October 2024.
2. The London Borough of Harrow 1969 Definitive Map and Statement shall be modified as described in Part I and Part II of the Schedule and shown on the maps attached to the Order.
3. This Order shall take effect on the date it is confirmed and may be cited as The London Borough of Harrow Definitive Map Modification Order 2024 Tranche 1 (Urban Footpaths on Harrow Council's Land).

Made on 5th December 2024

SCHEDULE

Part I

Modification of 1969 Map

Description of paths or ways to be added as shown on the maps

Path Nos	Start address	End address	Length	Width
UF2	Albury Drive (between Nos38 & 40)	Latimer Close (east side of Nos29)	86.7m	2.1m - 2.3m
UF5	Ashridge Gardens (between Nos16 & 18)	Service road to rear of 161 Marsh Road	62.9m	1.4m - 1.6m
UF10	Beatty Road (between Nos42 & 43)	Marsh Lane (between Nos136 & 140)	74.6m	2m - 3.3m
UF11	Golf Close (to northeast side Nos29)	Wolverton Road (between Nos20 & 22)	79.4m	1.5m - 2.2m

UF12	Beresford Road (Nos35 & 37)	Harrow Recreation Ground (by tennis courts)	44.3m	2.9m - 3m
UF17	Brancker Road (between Nos59 & 61)	Waghorn Road (between Nos 51 & 53)	275.6m	2.4m - 2.8m
UF22	Lascelles Avenue (7m to the west of Nos24)	Butler Road (opp. Nos4)	266.3m	1.8m - 4.6m
UF25	Canterbury Road (between Nos141 & 143)	Apsley Close (adjacent Eltham Lodge)	50.6m	2.2m - 3.4m
UF31	Charlton Road (between Nos188 & 190)	Glebe Avenue (between Nos60 & 62)	71.5m	2.7m - 4.3m
UF32	Gordon Avenue (3m to east of Nos108)	Chartley Avenue (southern end of footway fronting Nos48)	46.1m	1m - 1.3m
UF42	Courtenay Gardens (eastern end of subway opp Nos10)	Augustine Road (eastern end of footway)	115.2m	1.8m - 3.2m
UF44	Cranbourne Drive (adjacent to allotments)	T-junction with Paths R131 & R130 (LB Hillingdon)	340.6m	0.9m - 1.4m
UF60	Elmgrove Gardens (between Nos32 & 34)	Elmgrove Crescent (between No.100a & 102)	52.1m	1.6m - 2.1m
UF81	Kingsley Road (between Nos71 & 73)	Public footpath Nos78 along northwest boundary of Roxeth Park.	31.9m	2.2m - 2.5m
UF92	Sandymount Avenue (right of No. 30))	Marsh Lane (at junction with London Road & The Broadway)	203.3m	2.5m - 3.3m
UF111	Headstone Lane (opp Melbourne Avenue junction)	Pinner View (footway at northern end)	457.6m	3.4m - 4.4m
UF134	South side of No. 263 The Ridgeway	West Harrow Station, The Gardens	672m	1.5m - 4m
UF148	Whitchurch Lane (5.8m west of Nos334)	Honeypot Lane (adjacent to northern boundary of Amber House opp 889 Honeypot Lane)	95.8m	1.6m - 2.4m
UF150	White Gate Gardens (between Nos51 & 53)	Robin Hood Drive (between vehicle access to Weald School and rear of Nos44 Chestnut Drive)	255.4m	1.7m - 3.8m
UF153	Gate of West Harrow Recreation Ground (near junction of Butler Road and Wilson Gardens)	Shaftsbury Avenue (opp Welbeck Road)	364.1m	3.4m - 4m

Part II

Modification of Definitive Statement Variation of particulars of paths or ways

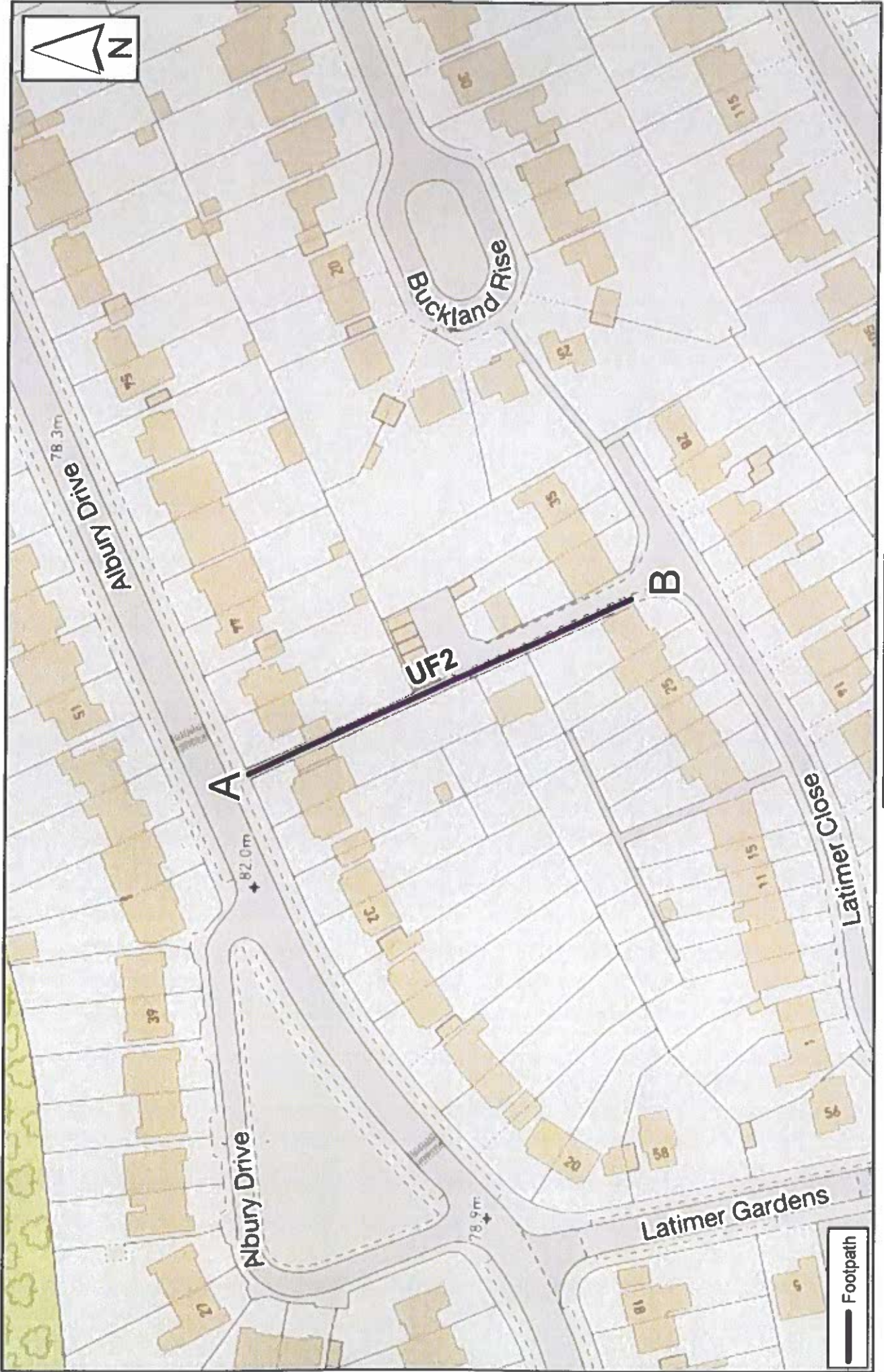
The following additions shall be made to the Definitive Statement for the London Borough of Harrow:

Path Nos	STATEMENT
UF2	A Footpath commencing between Nos38 & 40 (Point A), proceeding southeast and ending at the junction of the service road and Latimer Close northeast of Nos29 (Point B); with a width varying from 2.1m – 2.3m as shown on the map and with a centre line length of approximately 87m.
UF5	A Footpath commencing between Nos16 and 18 Ashridge Gardens (Point A), proceeding north and ending at its emergence onto the service road rear of 161 Marsh Road (Point B); with a width varying from 1.4m – 1.6m as shown on the map and with a centre line length of approximately 63m..
UF10	A Footpath commencing at the junction of footpaths on Beatty Road between Nos42 and 43 (Point A), proceeding in a south-easterly direction, turning eastwards between Nos136 and 140 Marsh Lane and ending at its junction with Marsh Lane (Point B); with a width varying from 2m – 3.3m as shown on the map and with a centre line length of approximately 75m.
UF11	A Footpath commencing on Golf Close northeast of Nos29 (Point A), proceeding northeast along the boundary of Nos 29, turning southwest along the boundary of Nos22 Wolverton Road and ending at its junction with Wolverton Road between Nos 20 and 22 (Point B) with a width varying from 1.5m – 2.2m as shown on the map and with a centre line length of approximately 80m.
UF12	A Footpath commencing on Beresford Road between Nos 35 and 37 (Point A), proceeding east and ending at the entrance to Harrow Recreation Ground (by the tennis courts) (Point B); with a width varying from 2.9m – 3m as shown on the map and with a centre line length of approximately 44m.
UF17	A Footpath commencing on Brancker Road between Nos 59 and 61 (Point A) proceeding in an easterly direction, crossing over Hinkler Road and continuing northeast between Shelia Scott Court and the grass verge , crossing over Kenmore Road via the pedestrian crossing and continuing northwest between Nos69a and 71 Kenmore Road and ending at its junction with Waghorn Road between Nos51 & 53 (Point B) with a width varying from 2.4m – 2.8m as shown on the map and with a centre line length of approximately 276m.
UF22	A Footpath commencing at the junction with Springway and Lascelles Avenue 7m southwest of Nos24 Lascelles Avenue (Point A), heading in a north westerly direction along Springway, turning northwards outside Nos18 Springway and continuing north till its emergence on to Butler Road (Point B) with a width varying from 1.8m – 4.6m as shown on the map and with a centre line length of approximately 266m.
UF25	A Footpath commencing at the back of footway on Canterbury Road between Nos141 and 143 (Point A) , proceeding northeast and ending at its emergence on to Apsley Close (Point B) with a width varying from 2.2m – 3.4m as shown on the map and with a centre line length of approximately 51m.
UF31	A Footpath commencing at the back of footway on Carlton Road between Nos188 and 190 (Point A), proceeding southeast and ending at its junction with Glebe Avenue between Nos60 and 62 (Point B); with a width varying from 2.7mm – 4.3m as shown on the map and with a centre line length of approximately 72m.
UF32	A Footpath commencing at the back of footway of Gordon Avenue between Nos102 and 108 (Point A); proceeding northwest and ending at its junction with the Chartley Avenue outside Nos48 (Point B); with a width varying from 1m – 1.3m as shown on the map and with a centre line length of approximately 46m.
UF42	A Footpath commencing at the junction with Courtenay Gardens, opposite Nos10 (Point A) , proceeding southwest through the subway below Courtenay Avenue; turning in north-westerly direction to a junction of footpaths, taking the northwest path to its emergence onto Augustine Road opposite Nos141 (Point B); with a width varying from 1.8m – 3.2m as shown on the map and with a centre line length of approximately 115m.

UF44	A Footpath commencing at its junction with Cranbourne Drive opposite Nos30, adjacent to Cuckoo Hill Allotment Site (Point A) , heading in a north-westerly direction, adjacent to the allotment's southern boundary; then turning in a south-westerly direction and proceeding to its end at the Harrow borough boundary, joining London Borough of Hillingdon paths R131 & R130 (Point B); with a width varying from 0.9m – 1.4m as shown on the map and with a centre line length of approximately 341m.
UF60	A Footpath commencing at its junction with Elmgrove Gardens between Nos34 and 32 (Point A); proceeding southwards; turning southeast between Nos100a and Nos102 Elmgrove Crescent and ending at its emergence onto Elmgrove Crescent (Point B) with a width varying from 1.6m – 2.1m as shown on the map and with a centre line length of approximately 52m.
UF81	A Footpath commencing at its junction with Kingsley Road between Nos71 and 73 (Point A), proceeding southeast and ending at its junction with Footpath 78, adjacent to Roxeth Recreation Ground (Point B) with a width varying from 2.2m – 2.5m as shown on the map and with a centre line length of approximately 32m.
UF92	A Footpath commencing on the north side of Nos30 Sandymount Avenue (Point A), proceeding west along boundary of Nos30, turning northwards along the electrical substation boundary, turning westwards, following the path and emerging onto Marsh Lane at the junction with London Road (Point B); with a width varying from 2.5m – 3.3m as shown on the map and with a centre line length of approximately 203m.
UF111	A Footpath commencing at the park entrance to Headstone Manor Recreation Ground on Headstone Lane, opposite Melbourne Avenue (Point A); heading southeast along the path and turning southeast at the junction of paths, crossing the footbridge, then turning southeast again along the hedgerow, turning north east at another junction of paths and finally turning southeast at the entrance to the Headstone Manor Grounds till its junction with Pinner View, opposite Nos151 (Point B) with a width varying from 3.4m – 4.4m as shown on the map and with a centre line length of approximately 456m.
UF134	A Footpath commencing on The Ridgeway, at the entrance to the West Harrow Allotments, side of no.263 The Ridgeway (Point A), heading north and turning east after 54m, passing through the allotments site, turning northeast at the boundary between the allotments and the railway, heading northeast and exiting onto The Drive, east side of West Harrow Station Point B), with a width varying from 1.5m – 4m as shown on the map and with a centre line length of approximately 672m
UF148	A Footpath commencing at the entrance to Stanmore Marsh South on Whitchurch Lane, west of Nos334 (Point A); proceeding in a south-westerly direction, crossing a footbridge over the Edgware Brook; then continuing along the path south and then south westwards, ending at its emergence with Honeypot Lane adjacent to the northern boundary of Amber House opp Nos889 Honeypot Lane (Point B) with a width varying from 1.6m – 2.4m as shown on the map and with a centre line length of approximately 96m.
UF150	A Footpath commencing at its junction with White Gate Gardens between Nos51 & 53 (Point A); proceeding south and turning west along the rear of Nos53-73, turning southwards along the western boundary of Weald Rise Junior, Infant and Nursery School; ending at its emergence with Robin Hood Drive between the school and the rear of Nos44 Chestnut Drive (Point B) with a width varying from 1.7m – 3.8m as shown on the map and with a centre line length of approximately 255m.
UF153	A Footpath commencing at its junction with Butler Road, at the northern entrance to West Harrow Recreation Ground, west of Nos175 (Point A); proceeding southwards on a path through the park; turning southwest and continuing till its emergence on to The Ridgeway, outside the southern entrance to West Harrow Recreation Ground (Point B) with a width varying from 3.4m – 4m as shown on the map and with a centre line length of approximately 364m.

Urban Footpath 2

Scale 1:1000 on A4



Urban Footpath 5

Scale 1:500 on A4



Legend
Footpath Number
UF5



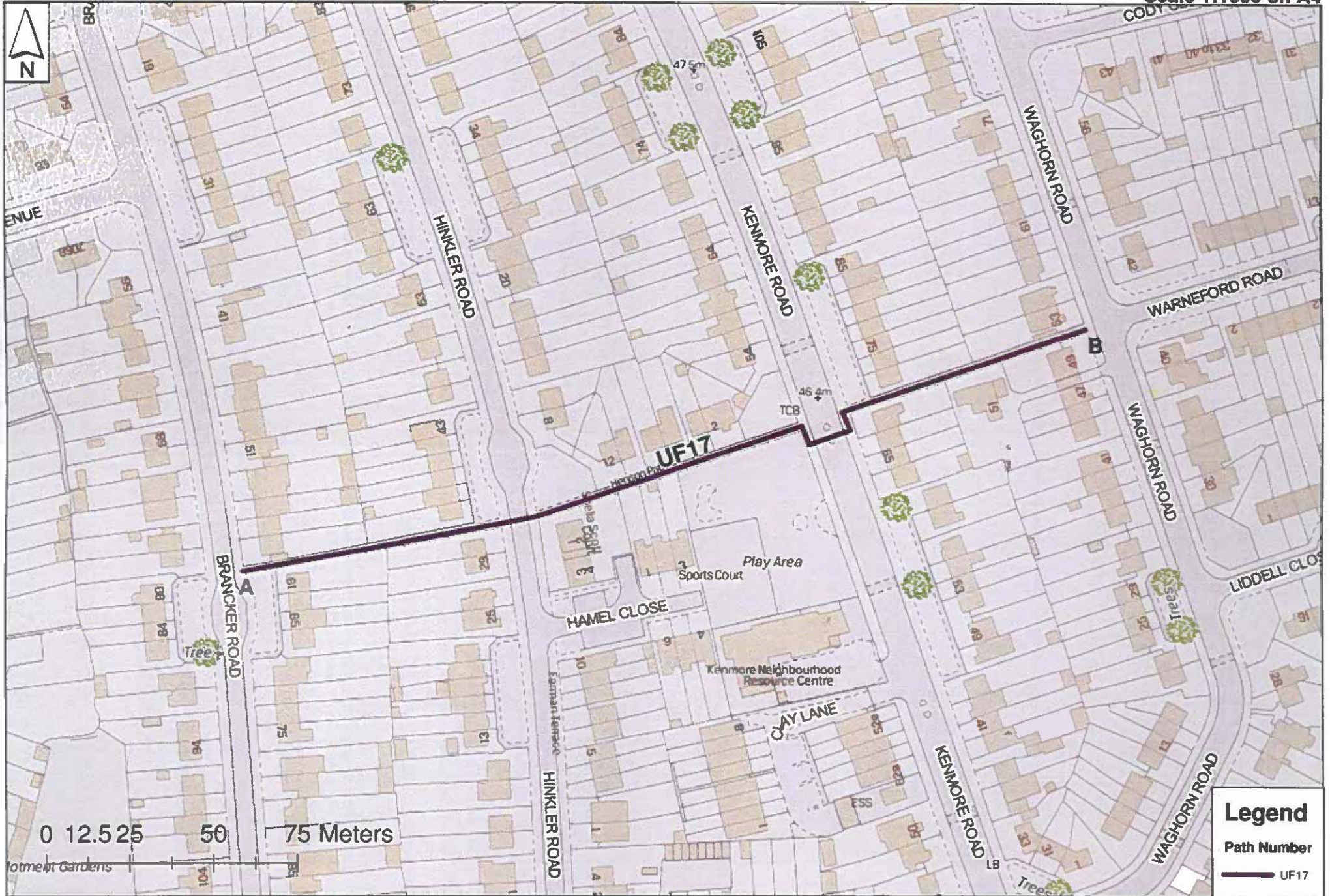
Legend
Footpath Number
— UF10



Urban Footpath 12

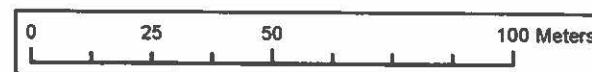
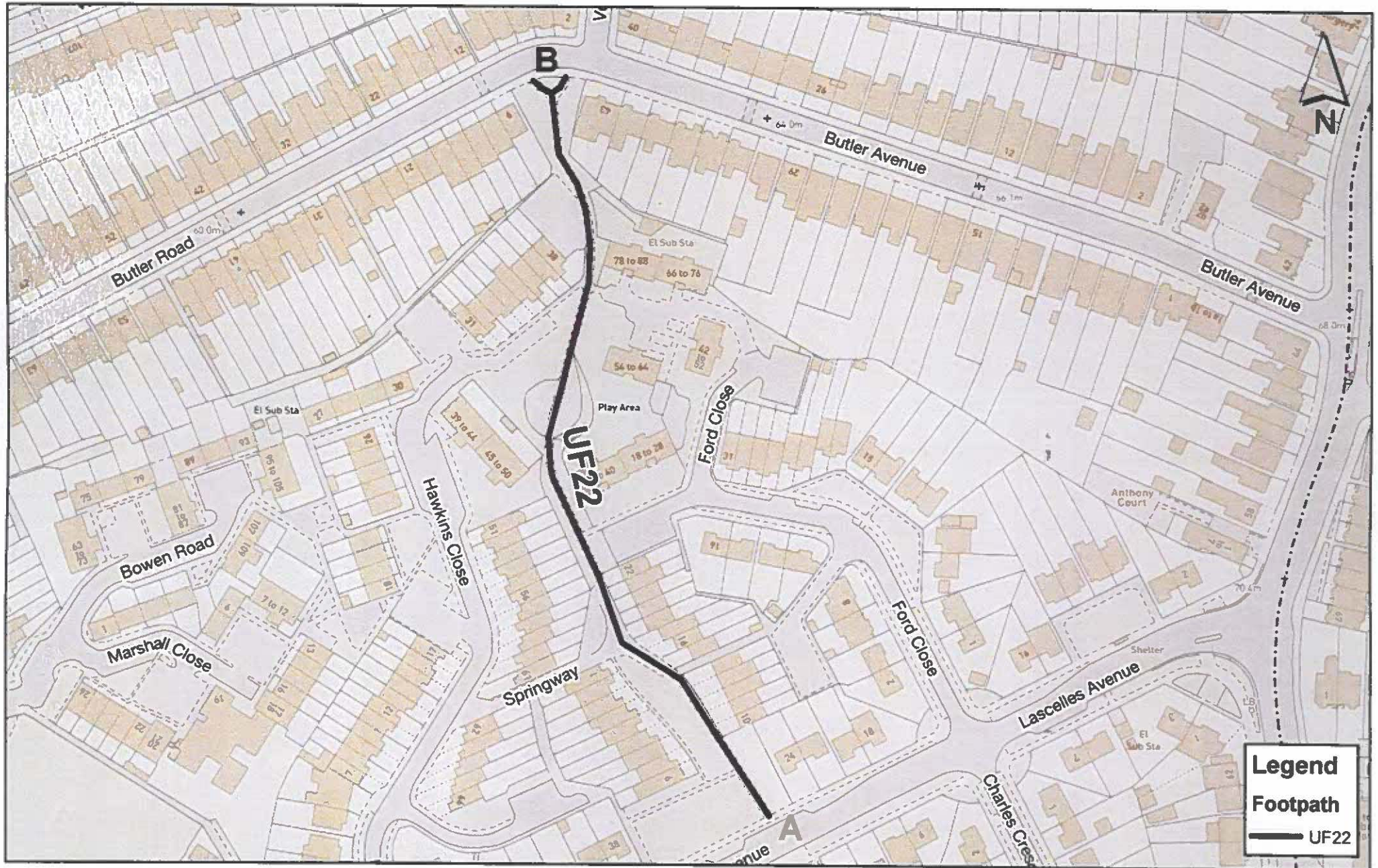
Scale 1:1000 on A4





Urban Footpath 22

Scale 1:1500 on A4





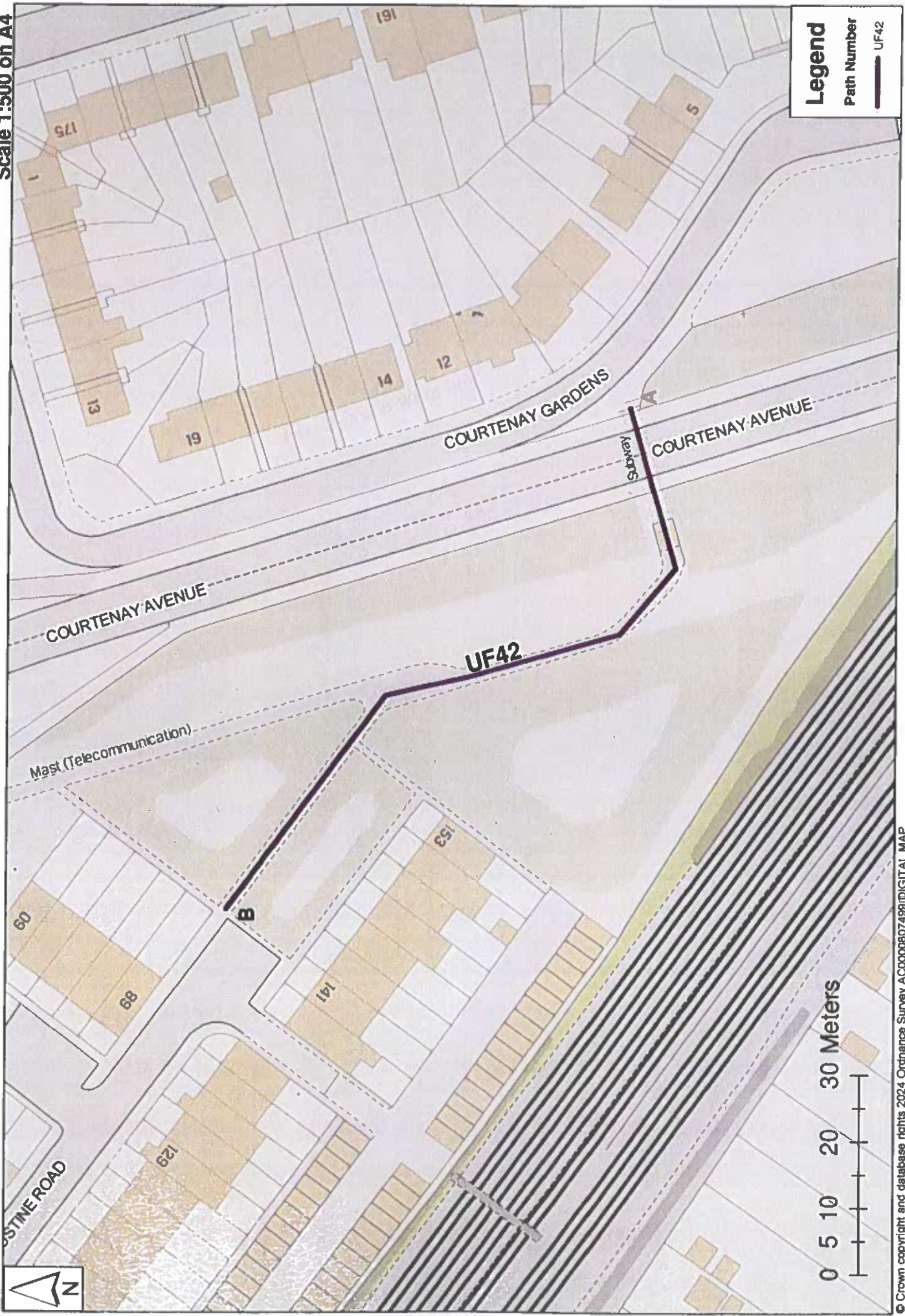




Legend
Footpath Number
— UF32

Scale 1:500 on A4

Urban Footpath 42

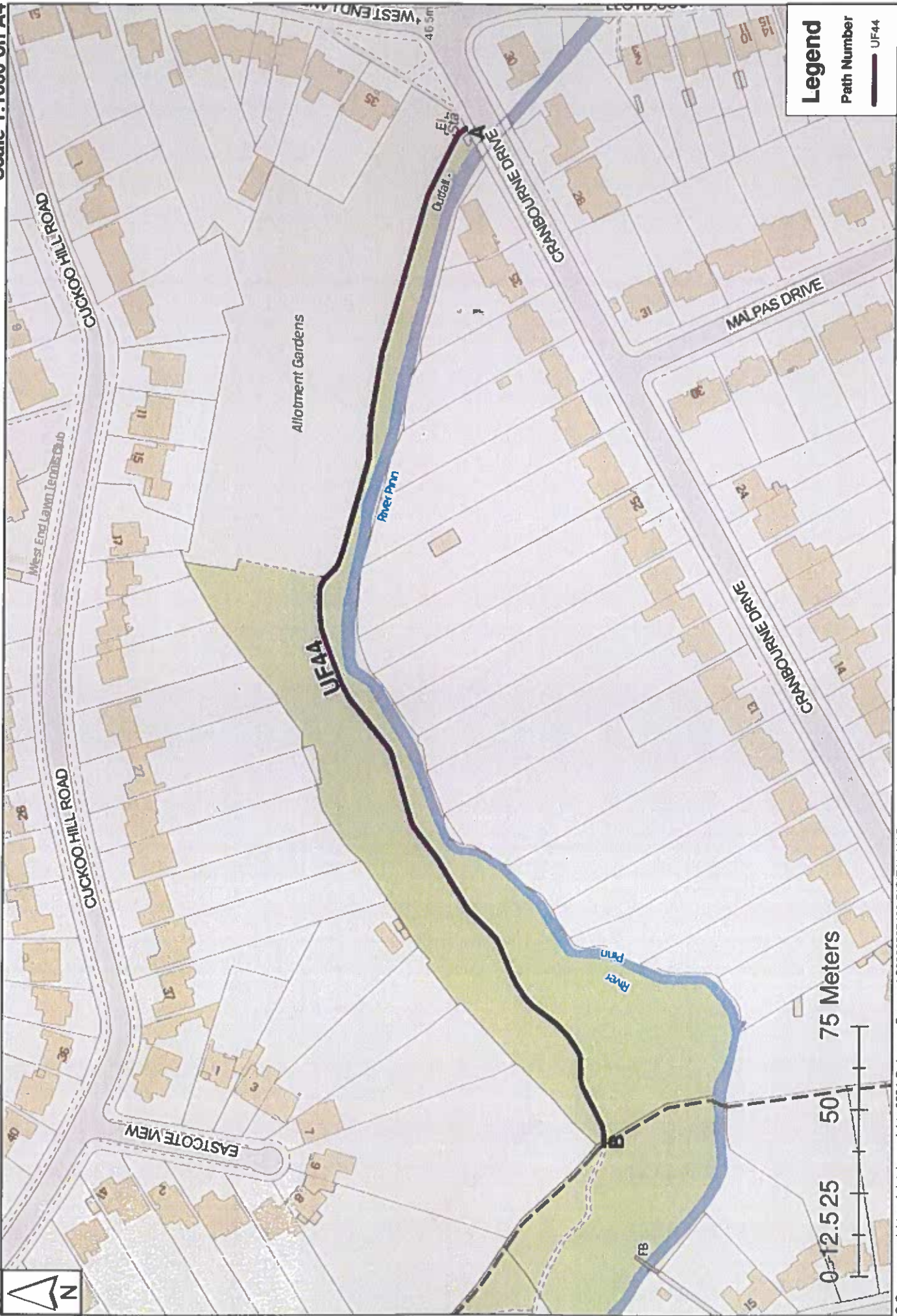


Legend

Path Number — UF42



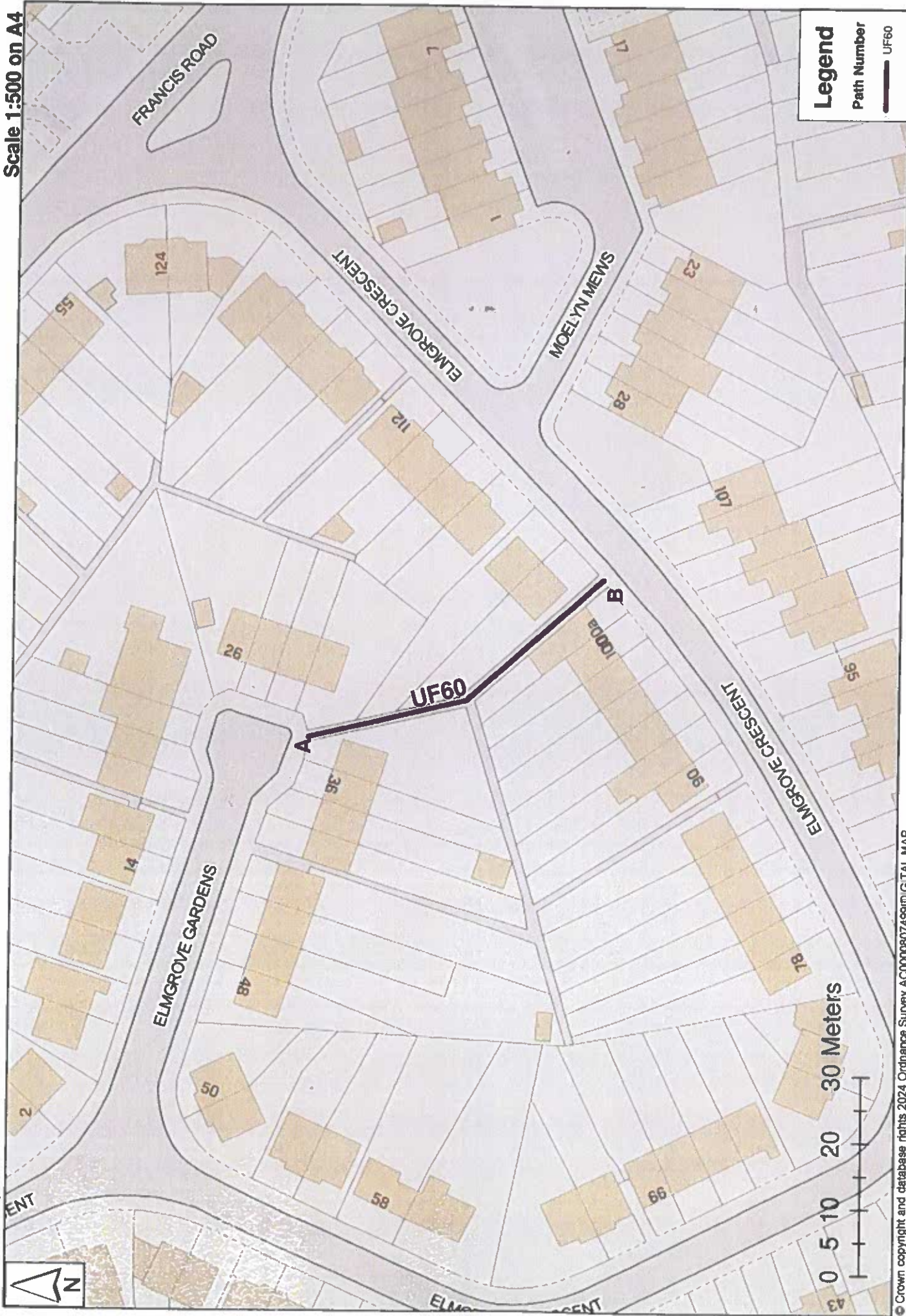
© Crown copyright and database rights 2024 Ordnance Survey AC0000807499/DIGITAL MAP
 DATA © COLLINS BARTHOLOMEW LTD (2024)
 © 2024 Europa Technologies Ltd. All rights reserved.



Legend

Path Number — UF44

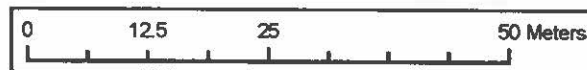
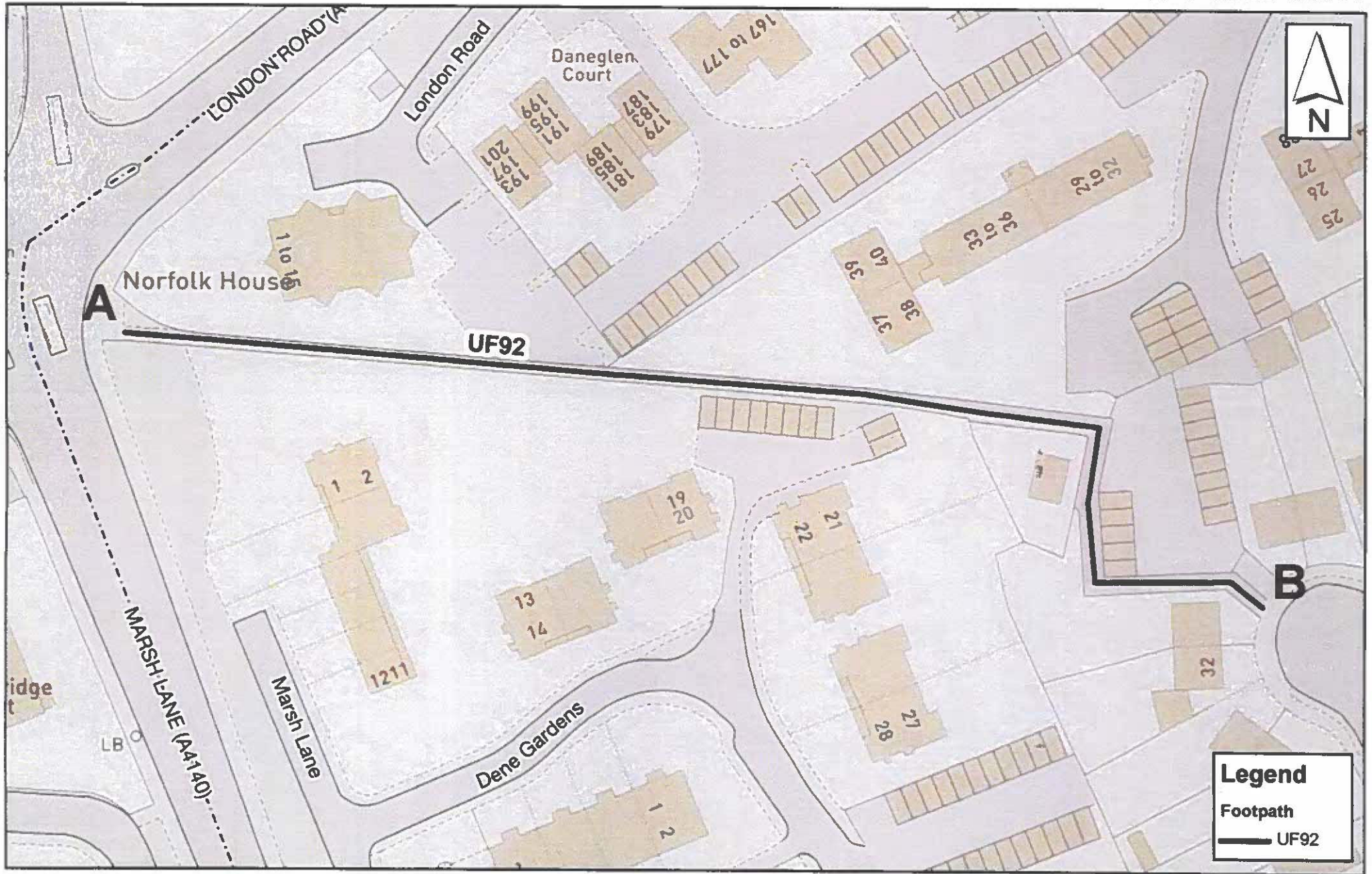






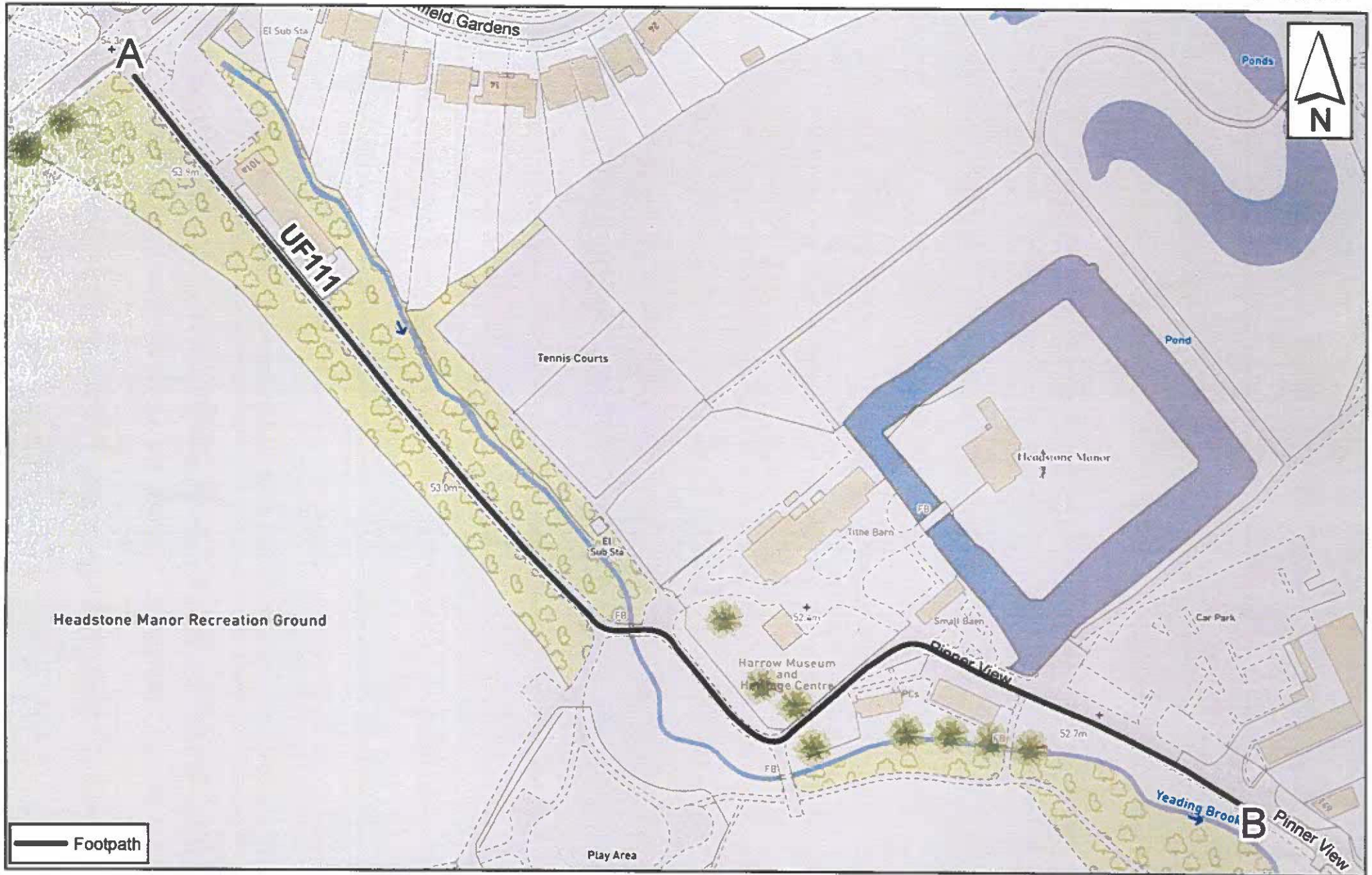
Urban Footpath 92

Scale 1:750 on A4



Urban Footpath 111

Scale 1:1500 on A4

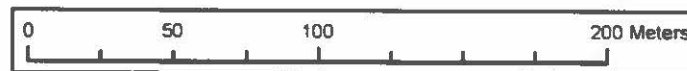
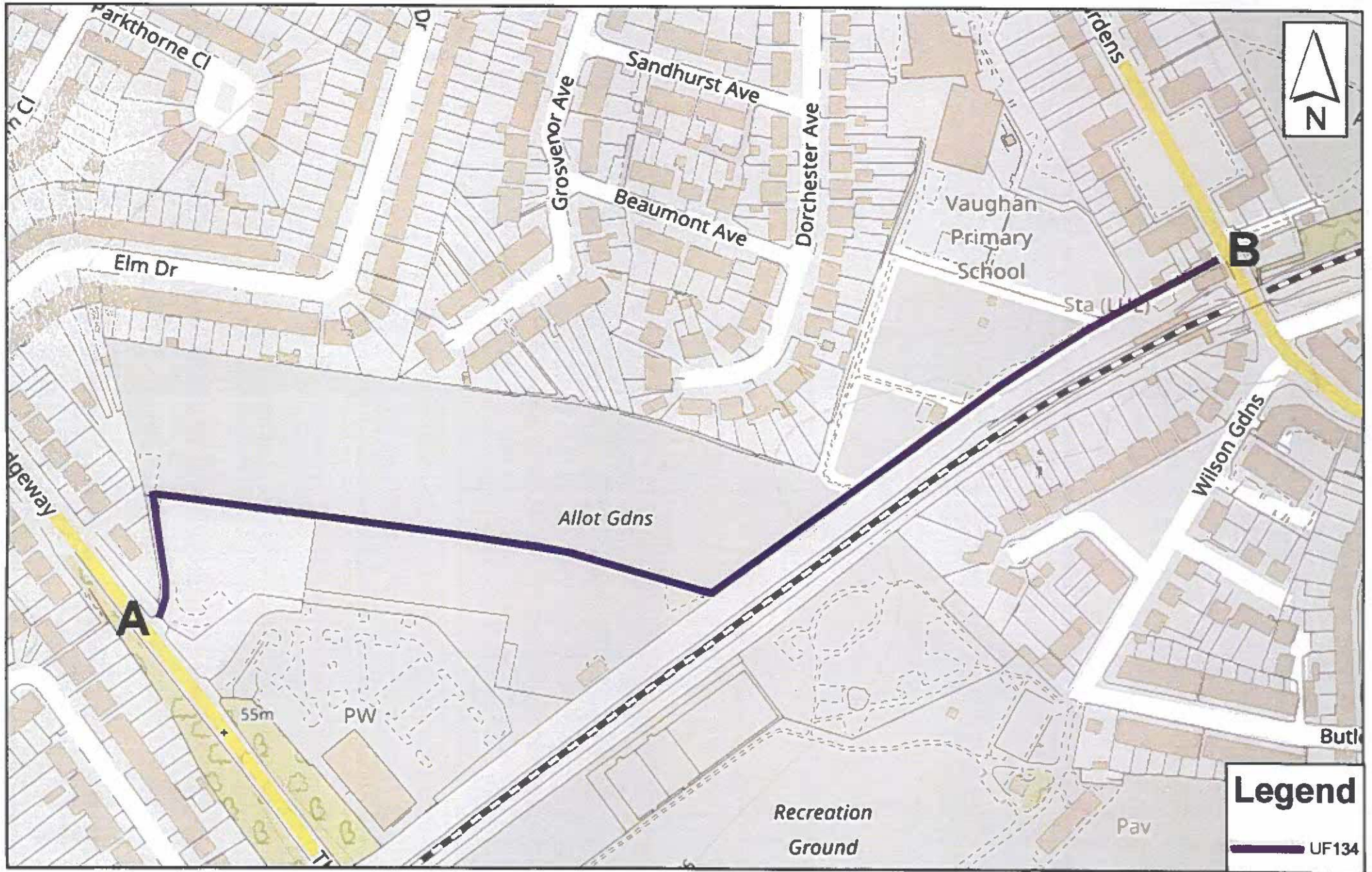


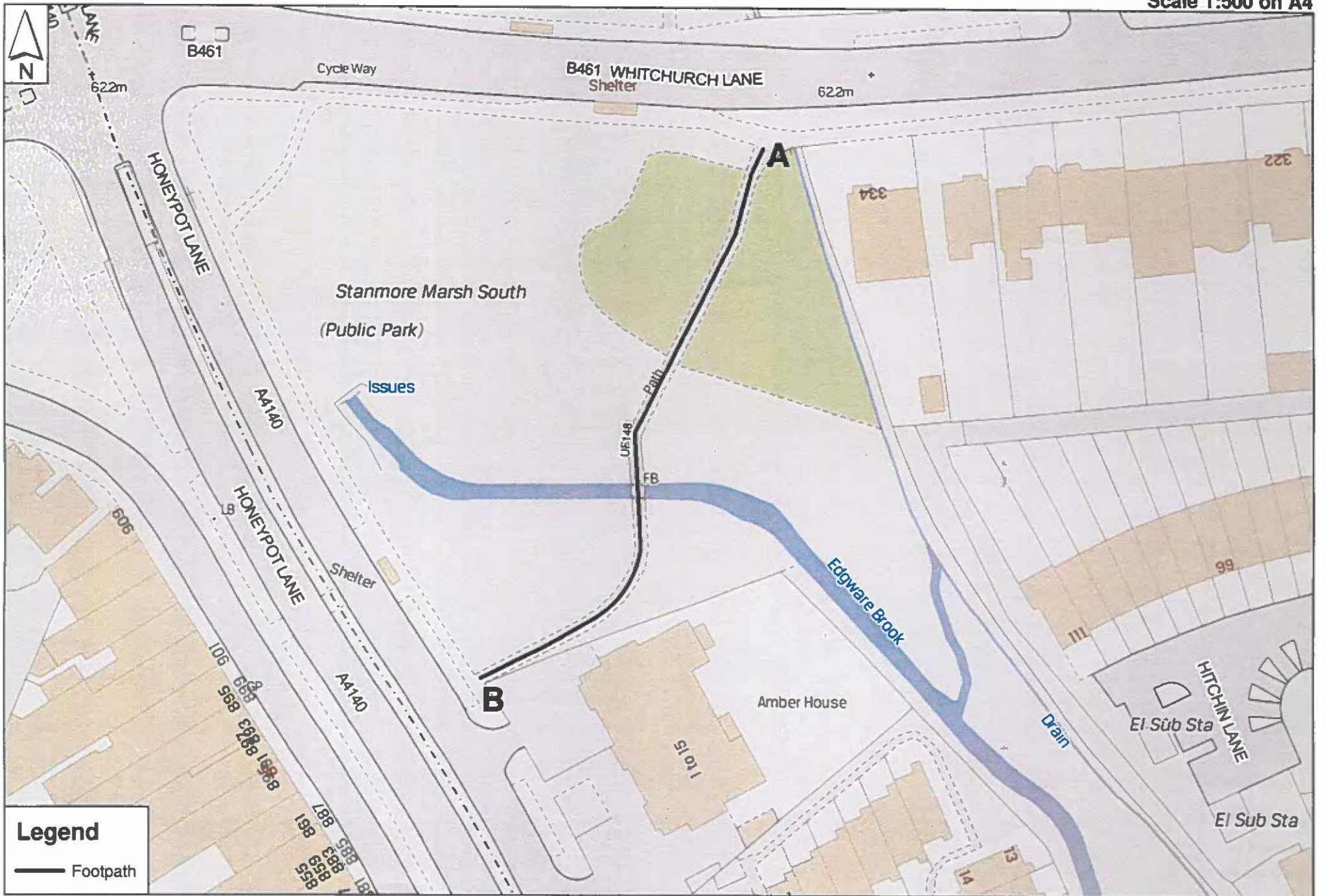
© Crown copyright and database rights 2024 Ordnance Survey AC0000807499
DIGITAL MAP DATA © COLLINS BARTHOLOMEW LTD (2024)
© 2024 Europa Technologies Ltd. All rights reserved.



Urban Footpath 134

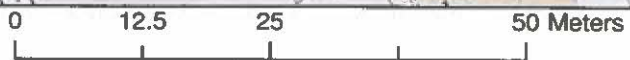
Scale 1:2500 on A4

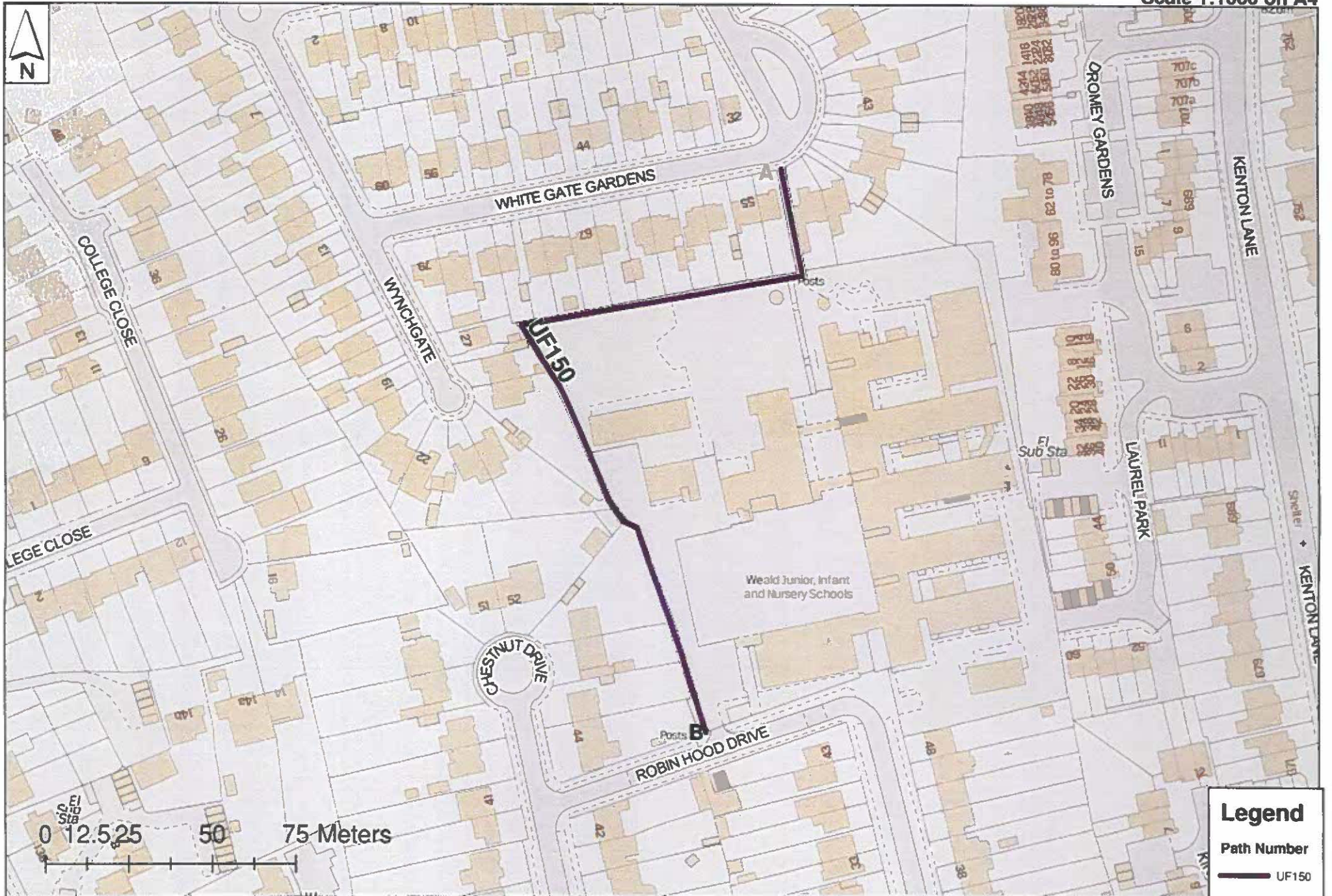




Legend

— Footpath





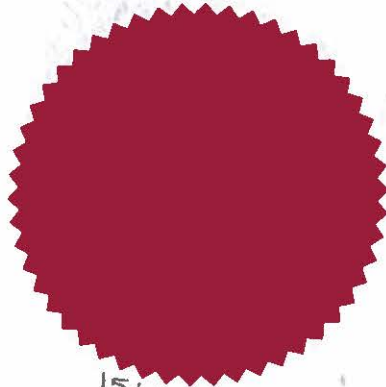
Urban Footpath 153

Scale 1:1000 on A4



Legend
Path Number
— UF153

THE COMMON SEAL OF THE)
MAYOR AND BURGESSES OF)
THE LONDON BOROUGH OF)
HARROW was hereto affixed)
in the presence of the officer)
named below who is duly)
authorised to attest this document)



156704

D. Alawihare

Signature

D. Alawihare, Senior Solicitor.

Name and Role